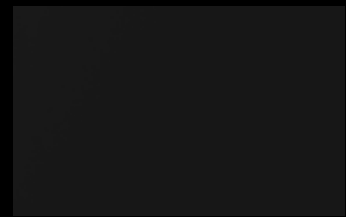
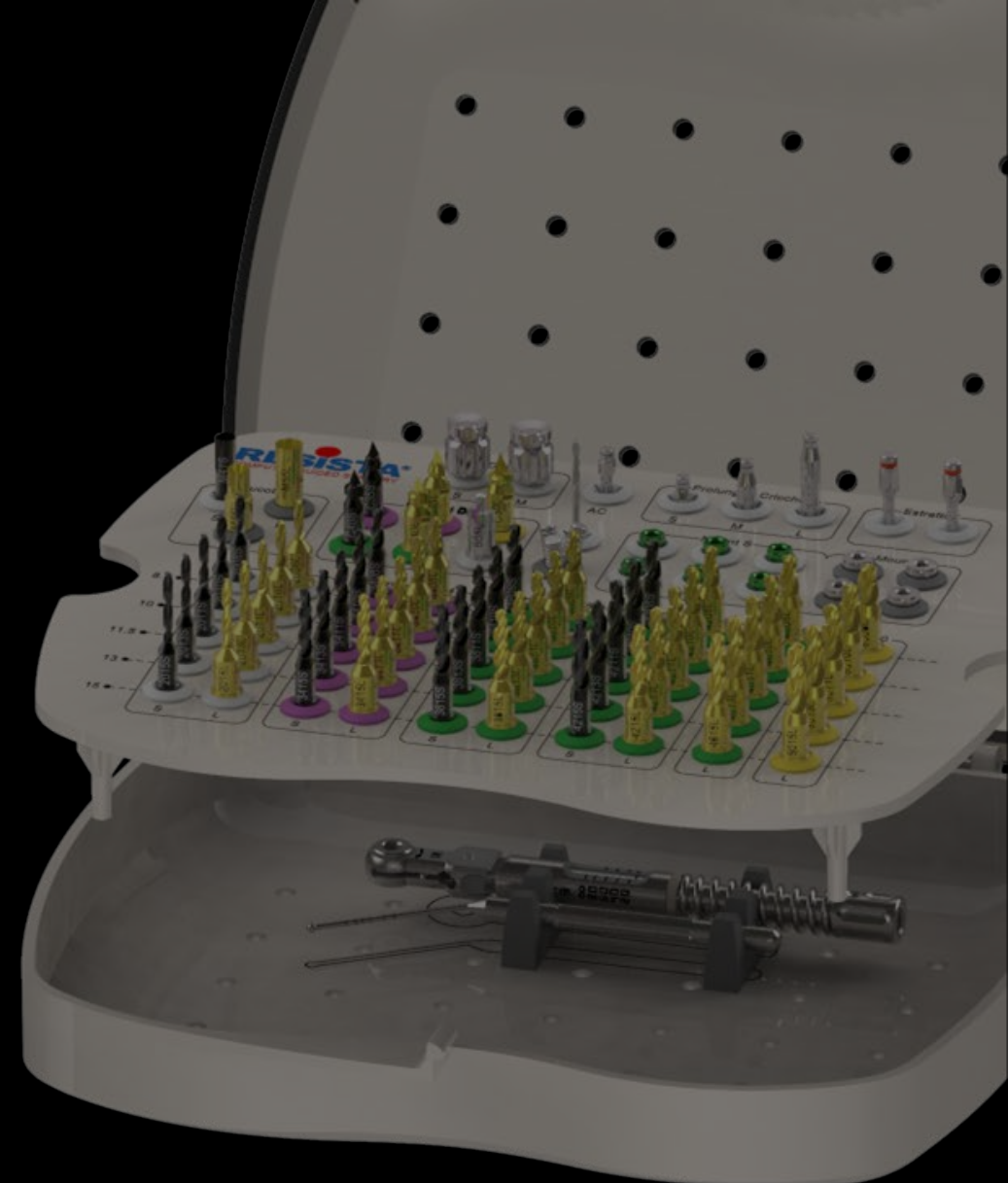
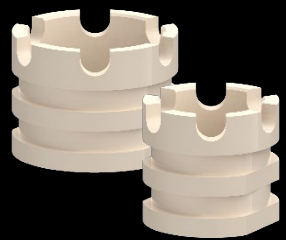


Kit Chirurgical

REVOLUTION



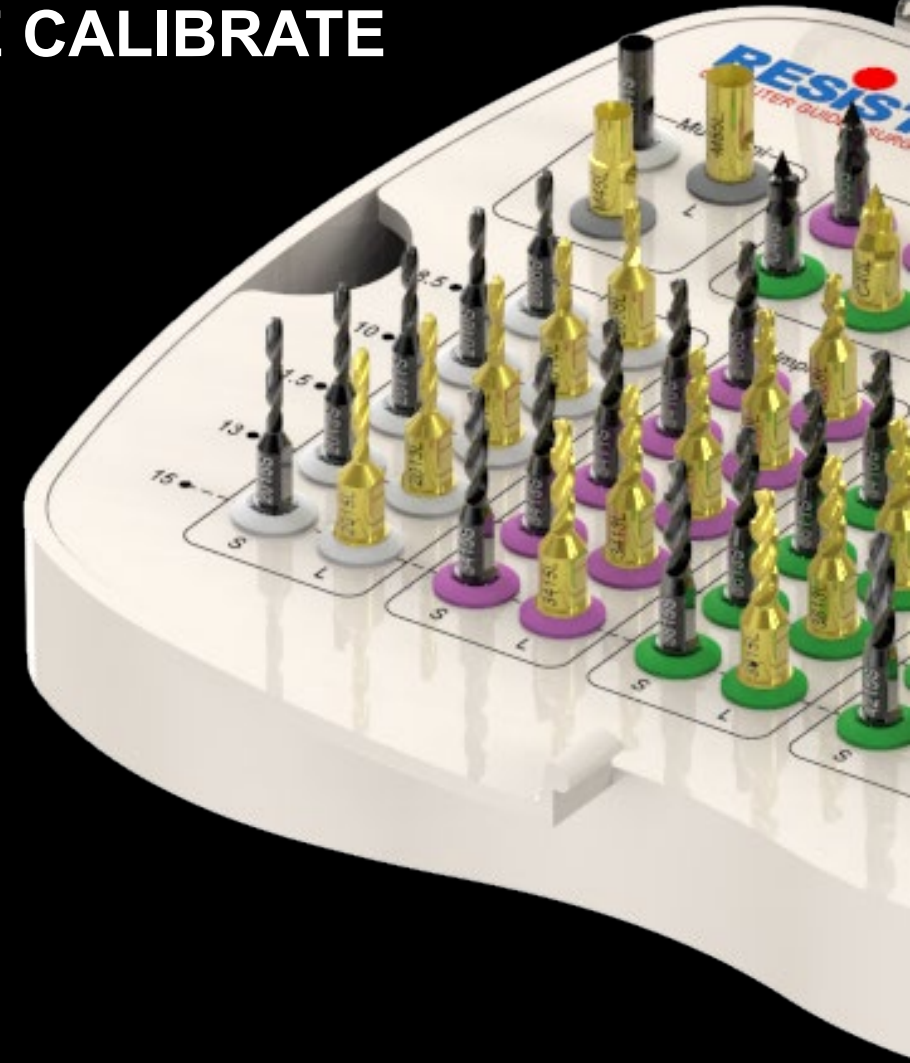
REVOLUTION



REVOLUTION

59 STRUMENTI ROTANTI

MUCOTOMI – BONE MILL – FRESE CALIBRATE



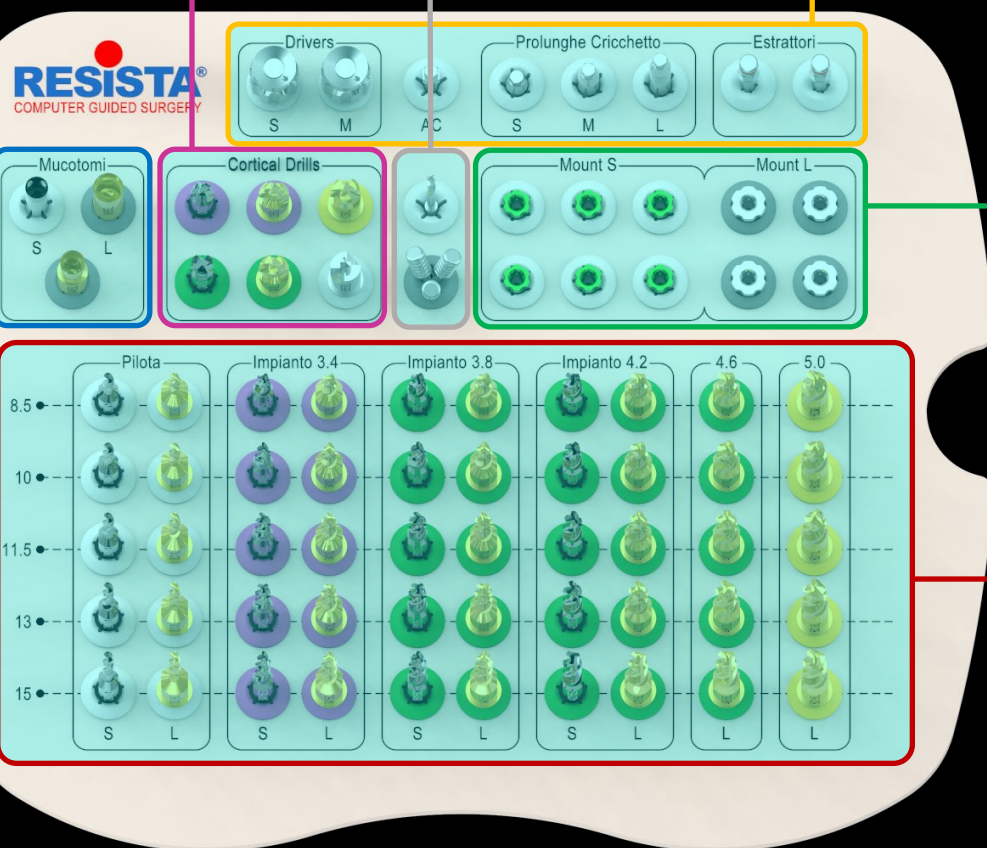
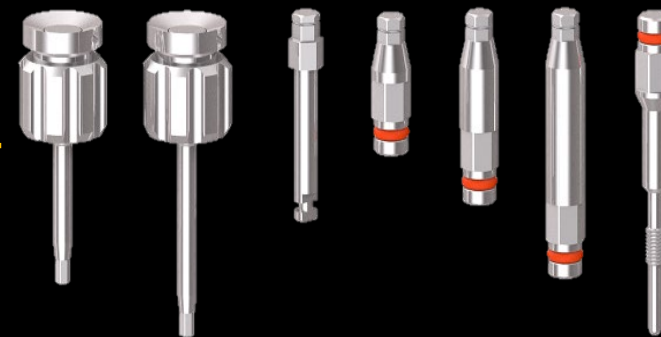
FRESE CORTICALI



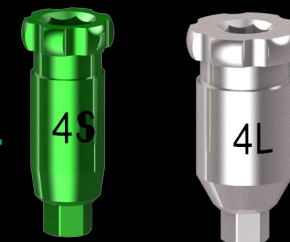
FRESA PIN + PINS



ACCESSORI



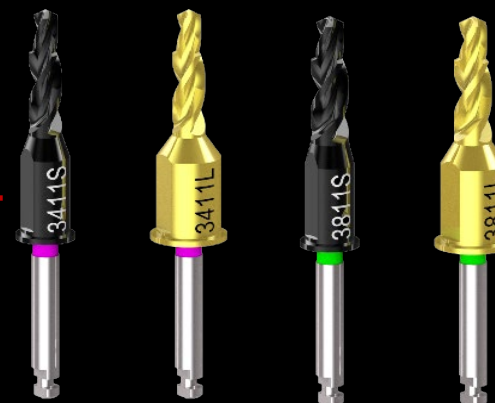
MONTATORI

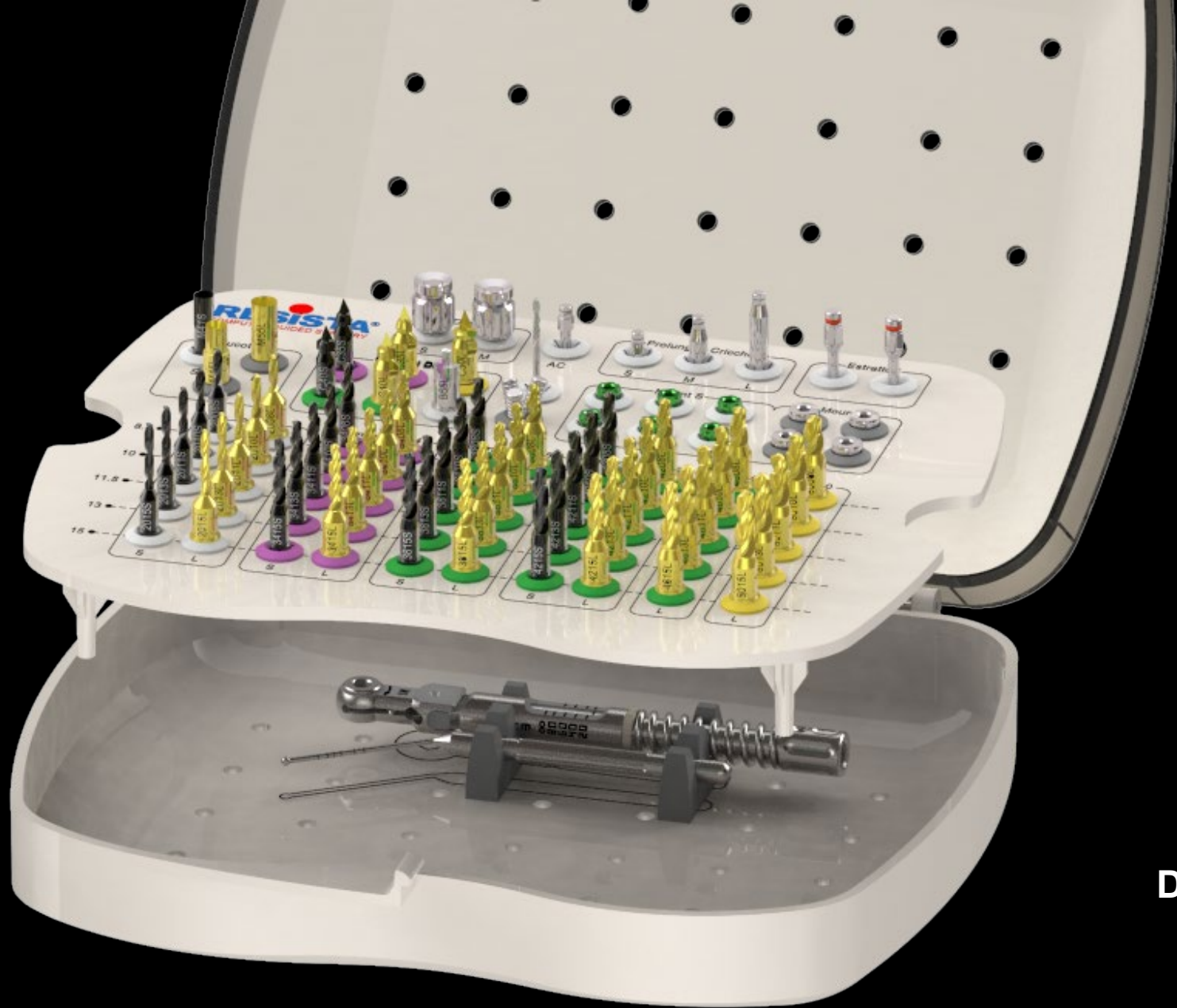


MUCOTOMI



FRESE CHIRURGICHE



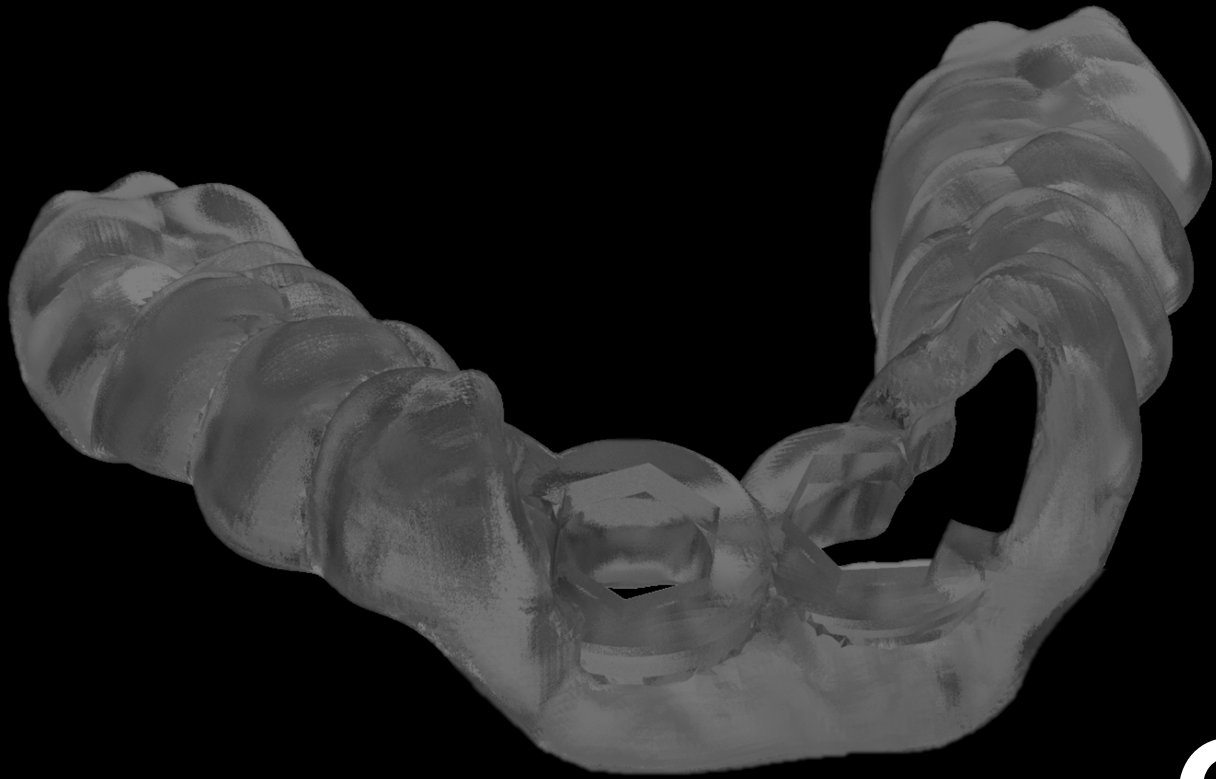


**SONDA MILLIMETRATA
BOTTONUTA**



**CRICCHETTO
DINAMOMETRICO**



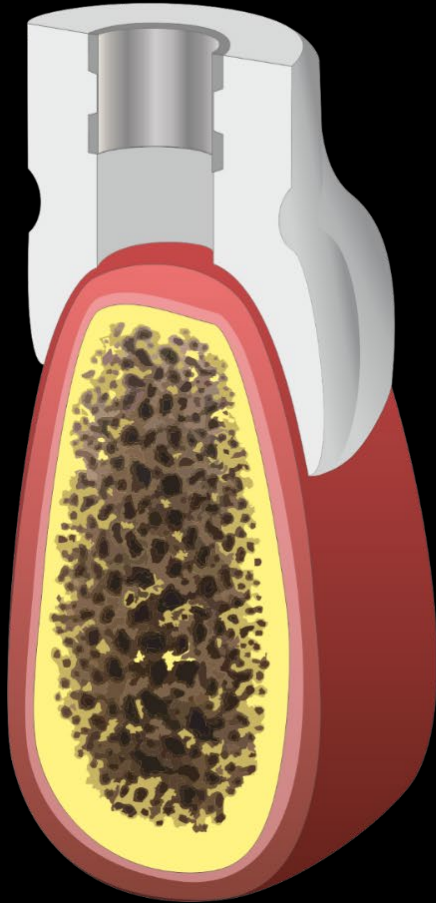


DIMA
CHIRURGICA
REVOLUTION

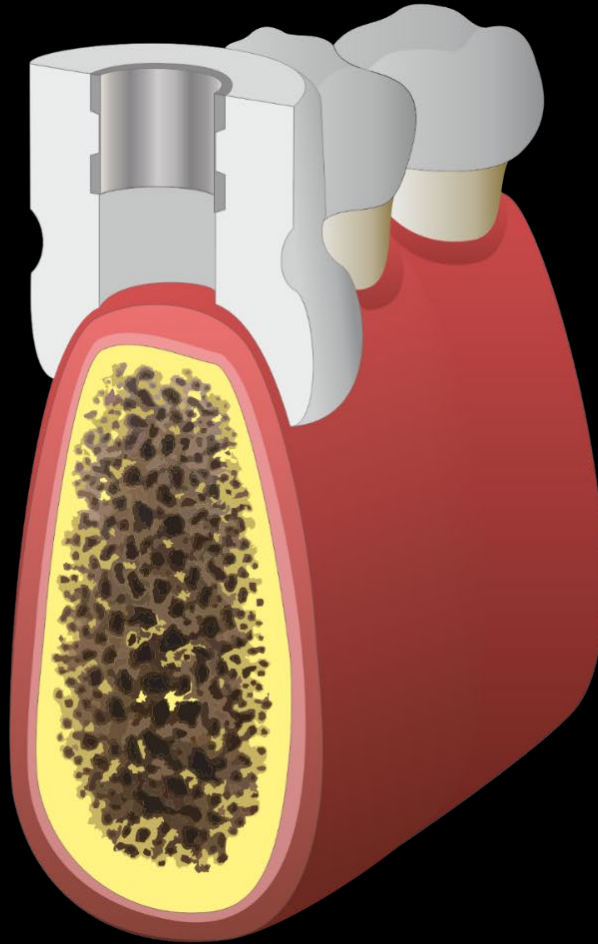
DIME CHIRURGICHE

MODALITÀ DI APPOGGIO

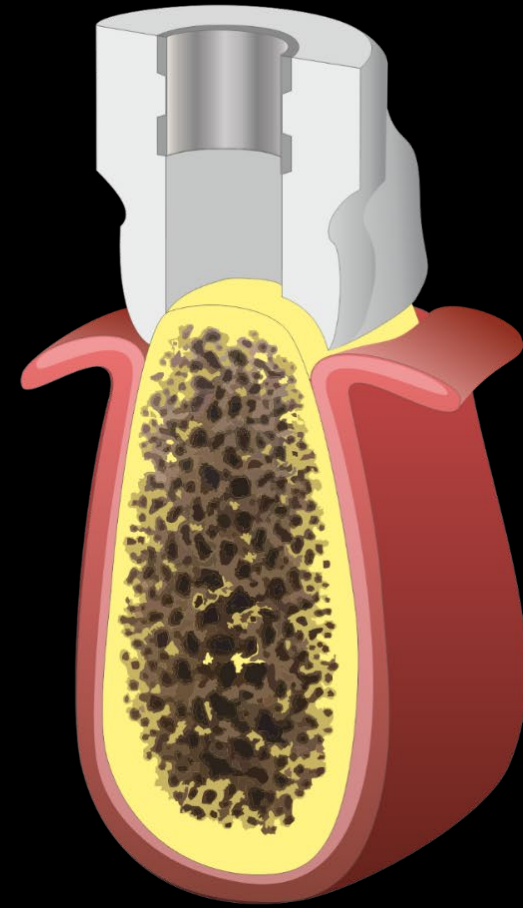
MUCOSO



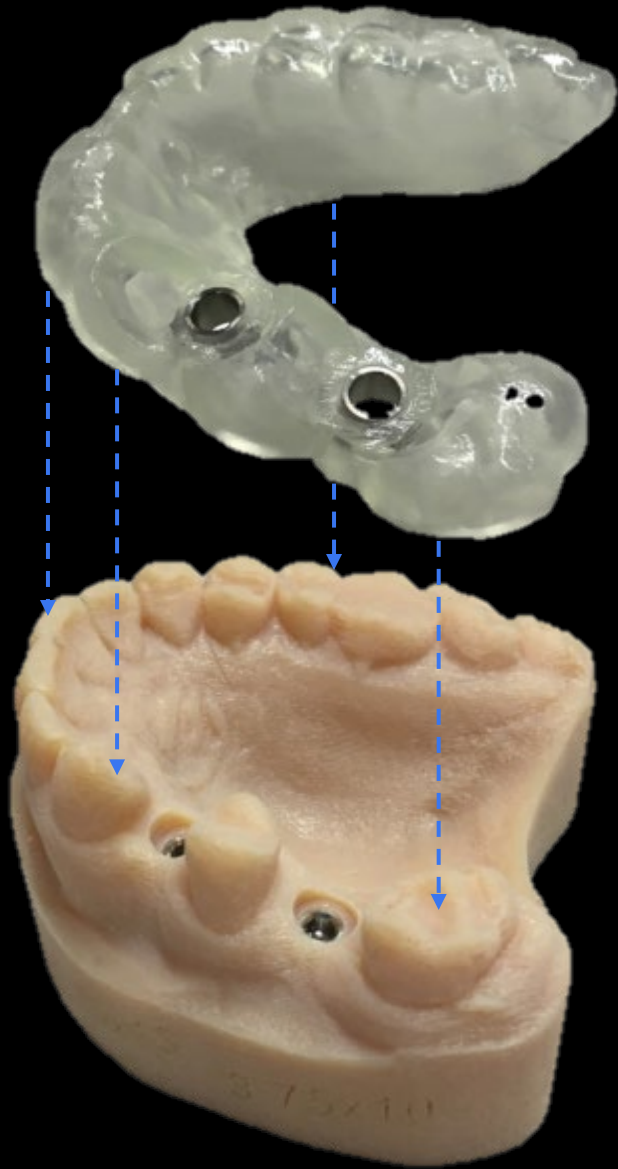
DENTALE



OSSEO

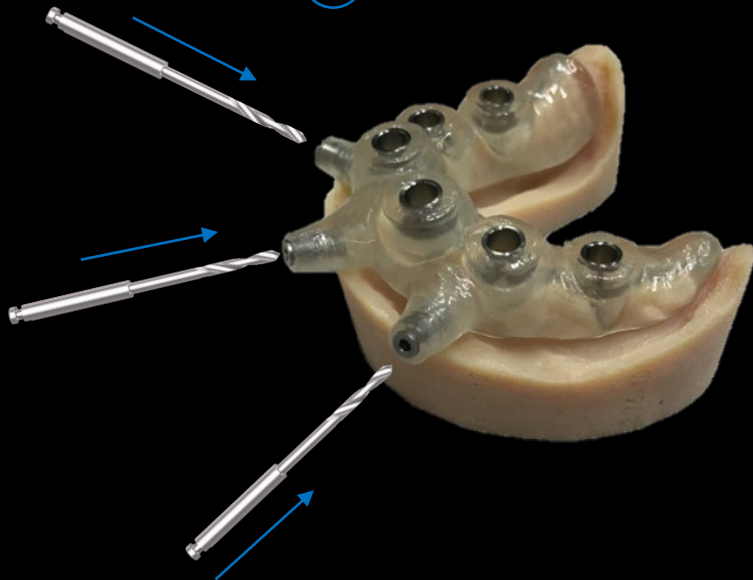


**DIMA AD APPOGGIO
DENTALE
PRECISIONE ASSOLUTA**

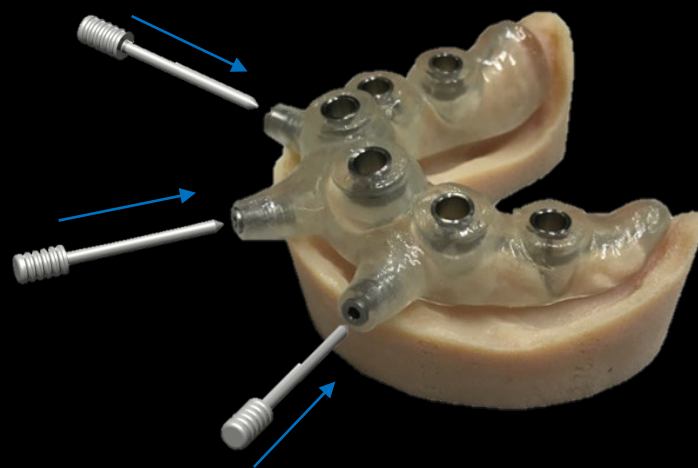


DIMA AD APPOGGIO MUCOSO FISSAGGIO CON PIN

① FRESA PINS



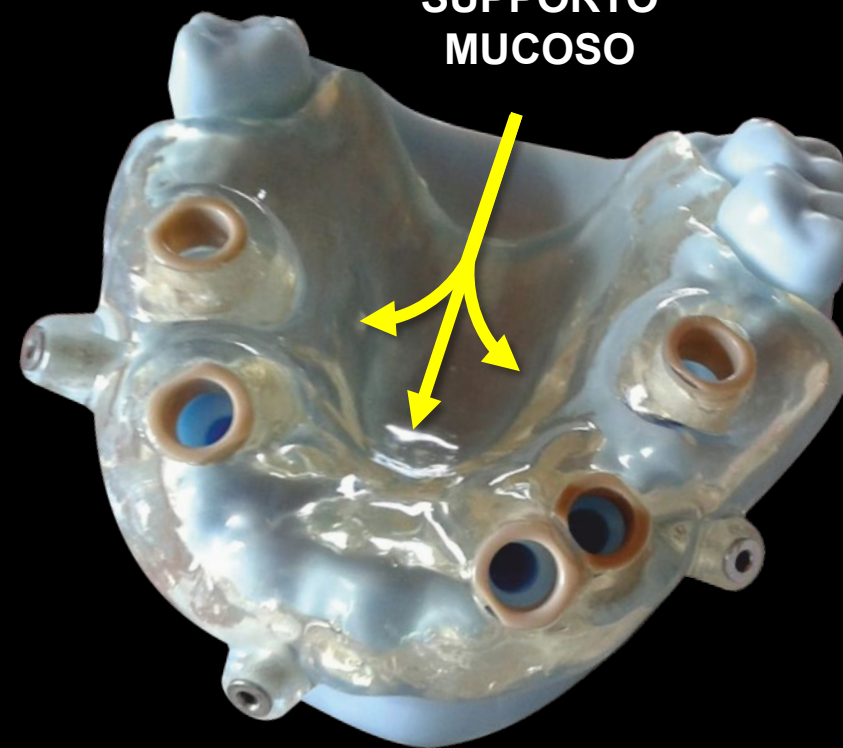
② INSERIMENTO PINS



③ DIMA FISSATA

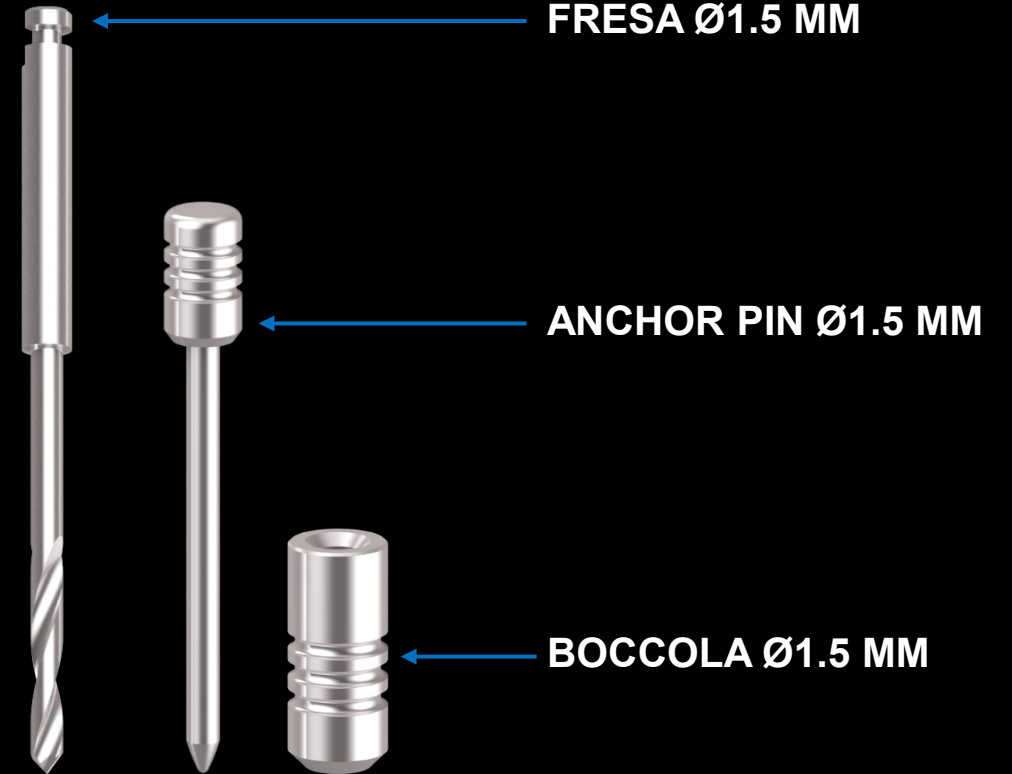
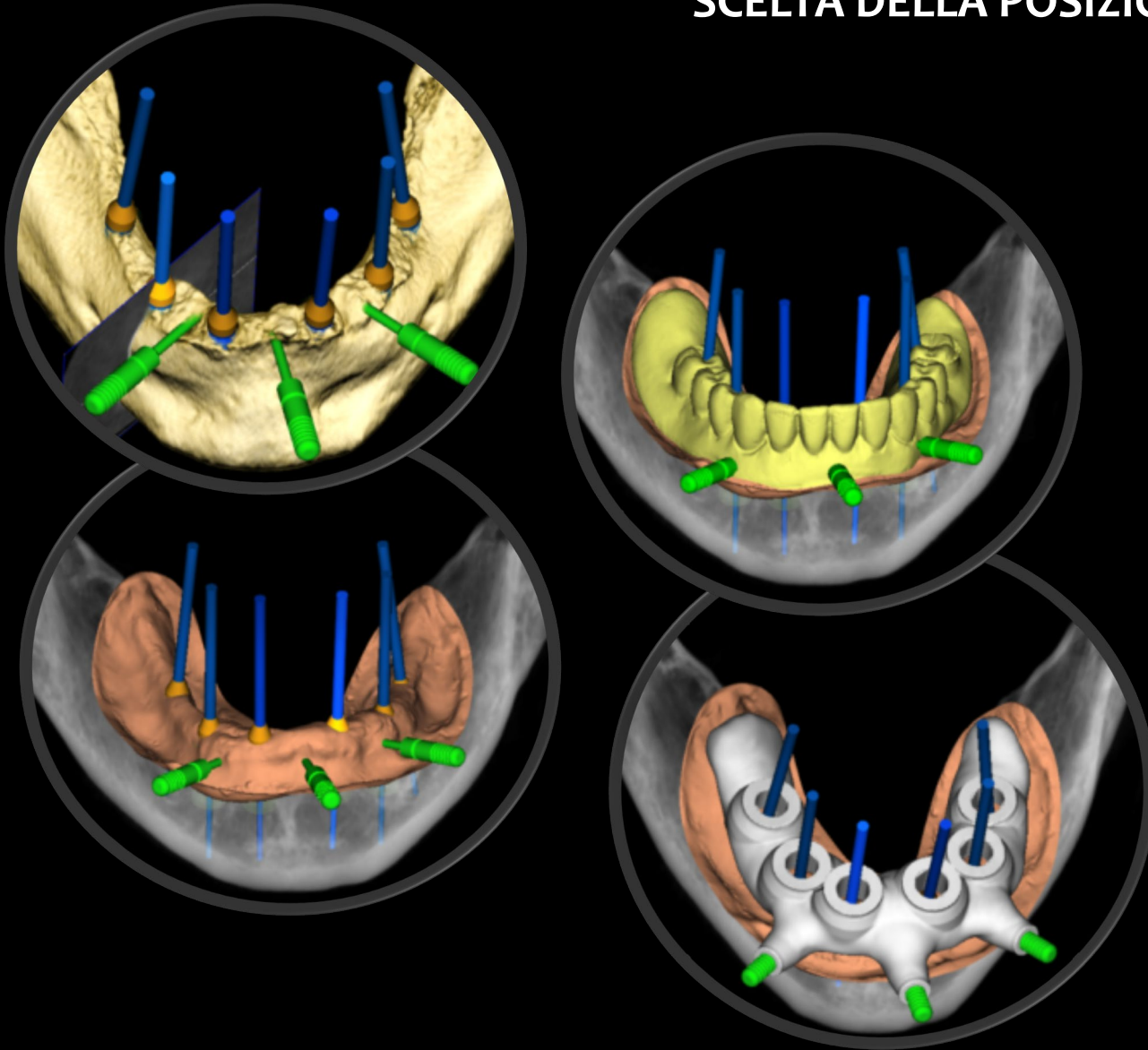


SUPPORTO
MUCOSO



PROGETTO DELLA POSIZIONE DEI PINS

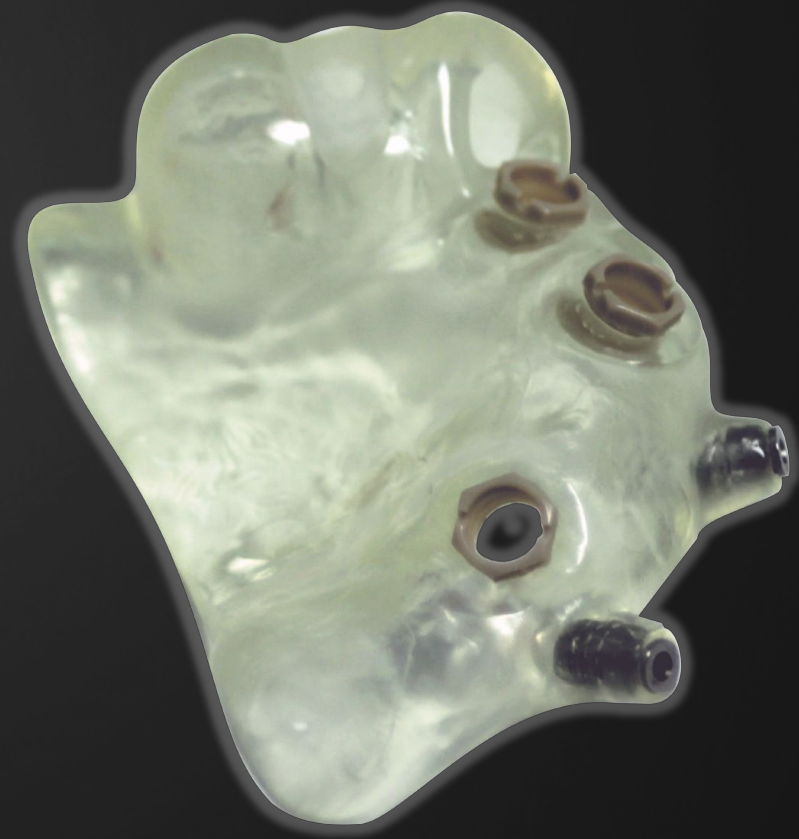
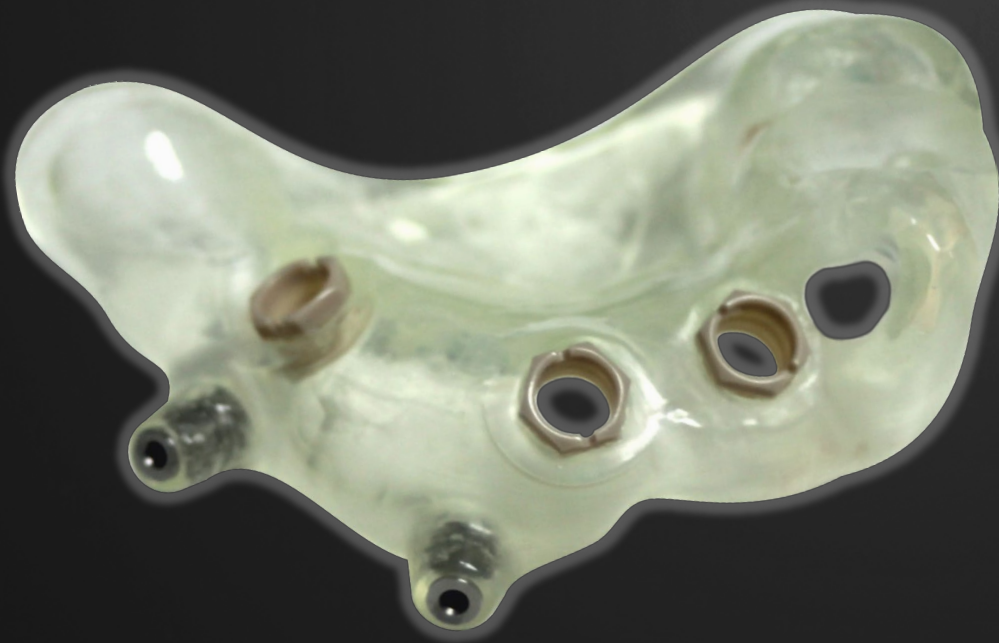
SCelta DELLA POSIZIONE OTTIMALE



DIMA AD APPOGGIO

MISTO

FISSAGGIO CON PIN



DIMA AD APPOGGIO

MISTO

FISSAGGIO CON GANCI



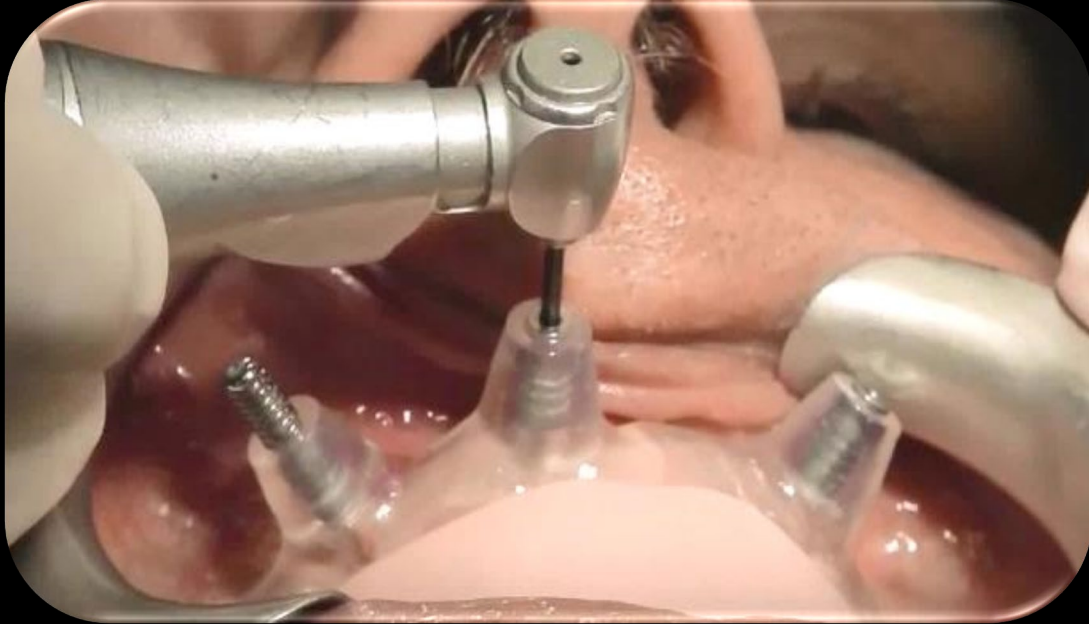
PRE ANESTESIA

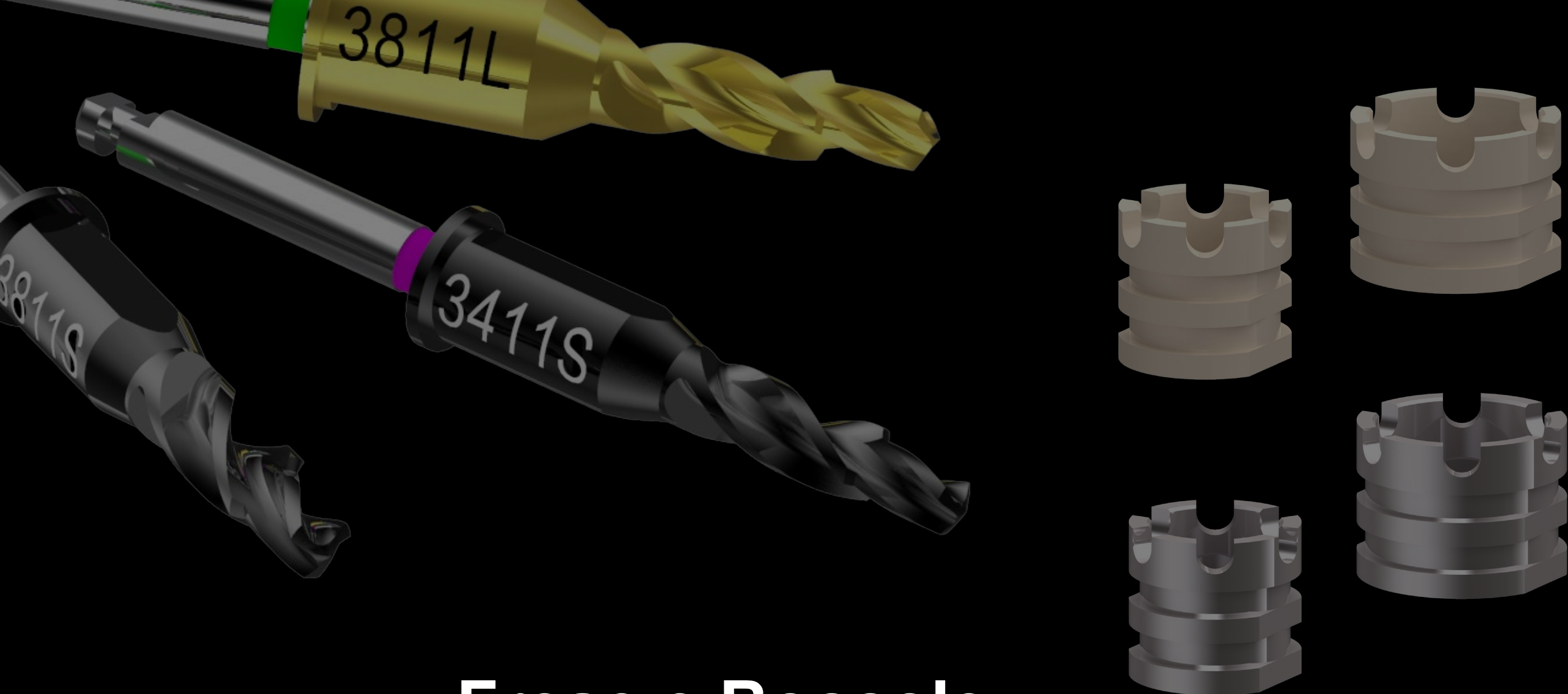


**CONTROLLO
DELLA STABILITA'**



FISSAGGIO CON PINS





Frese e Boccole

REVOLUTION

FRESE S

Ø4.15 mm



Small

FRESE L

Ø5.5 mm



Large

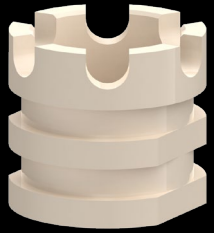


Small



Large

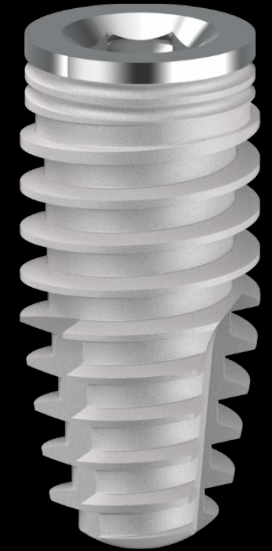
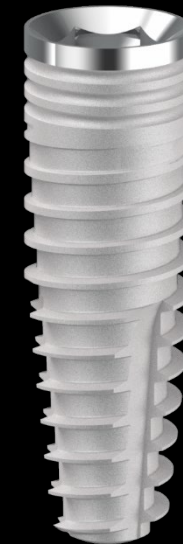
RAPPORTO IMPIANTO - BOCCOLA



Boccole SMALL $\varnothing 4.15$ mm



IMPIANTI : $\varnothing 3.0$ - $\varnothing 3.4$ - $\varnothing 3.8$



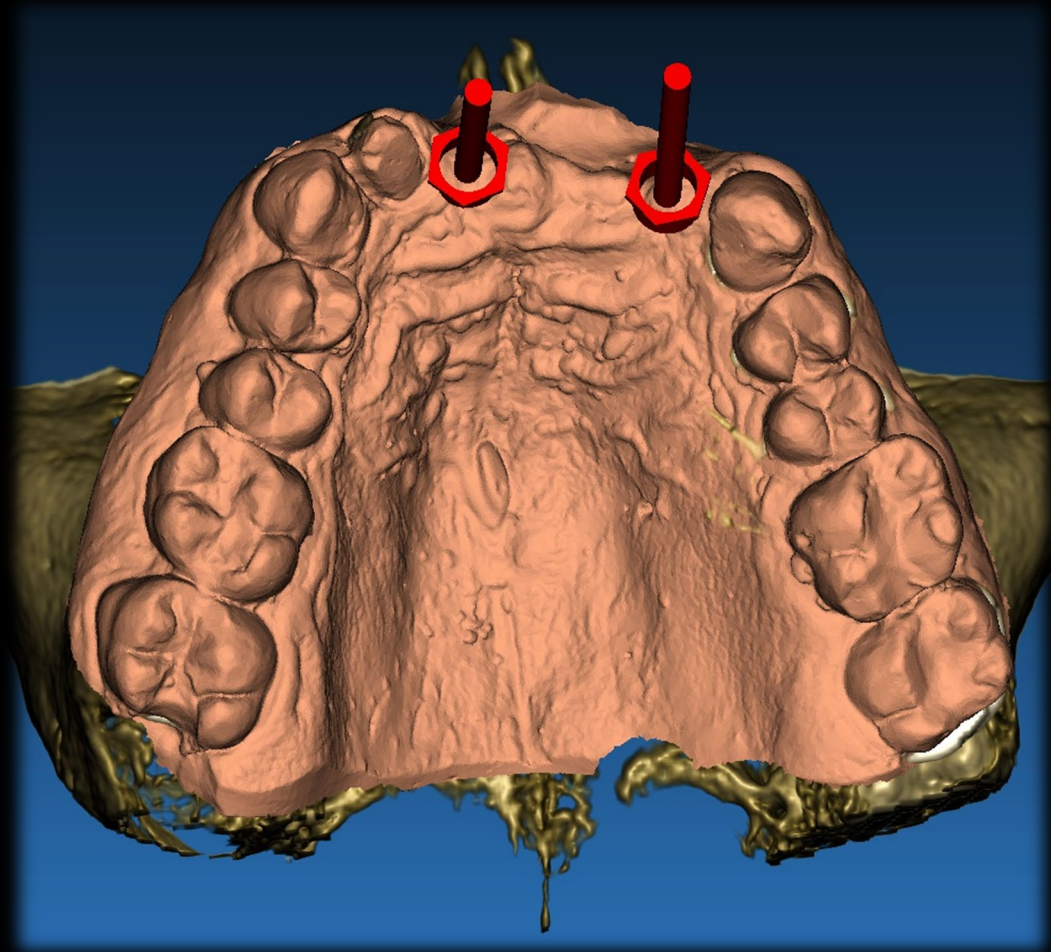
Boccole LARGE $\varnothing 5.5$ mm



IMPIANTI : $\varnothing 3.0$ - $\varnothing 3.4$ - $\varnothing 3.8$ - $\varnothing 4.2$ - $\varnothing 4.6$ - $\varnothing 5.0$

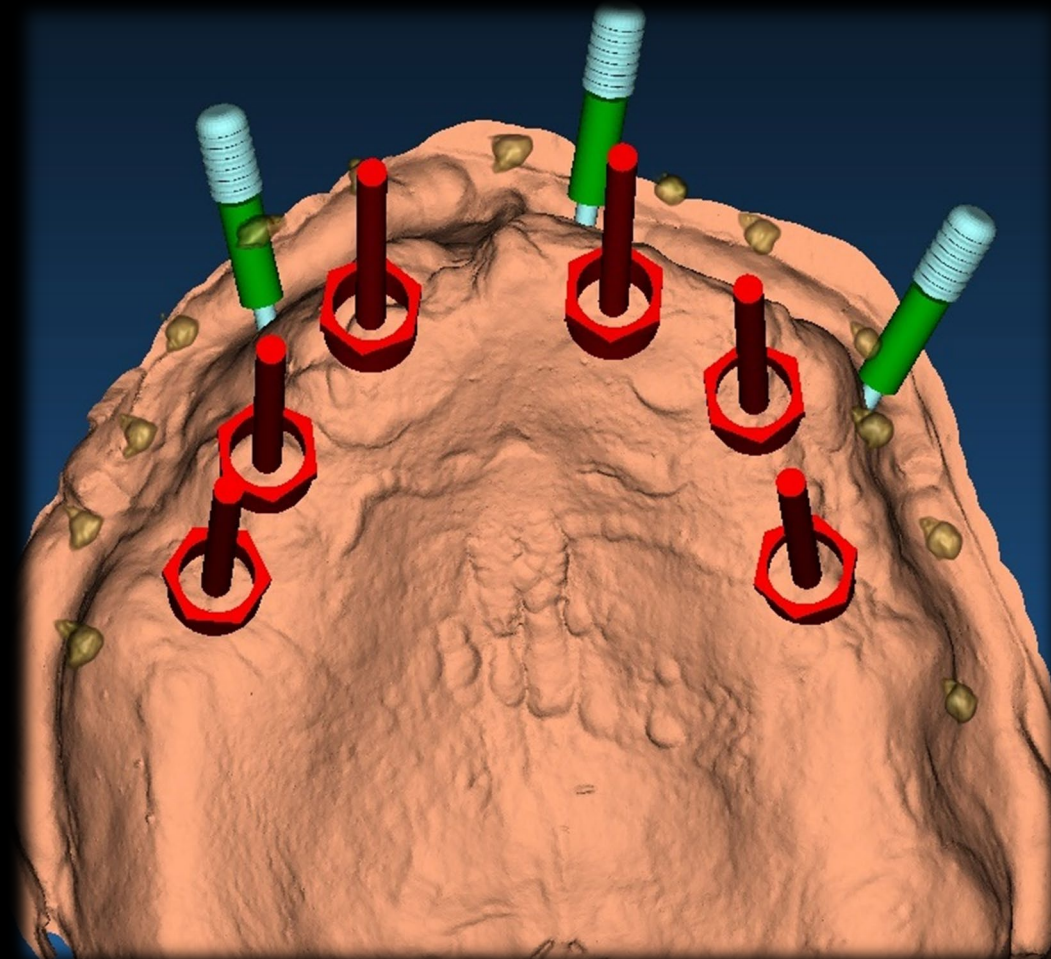
Boccola SMALL

Ø4.15

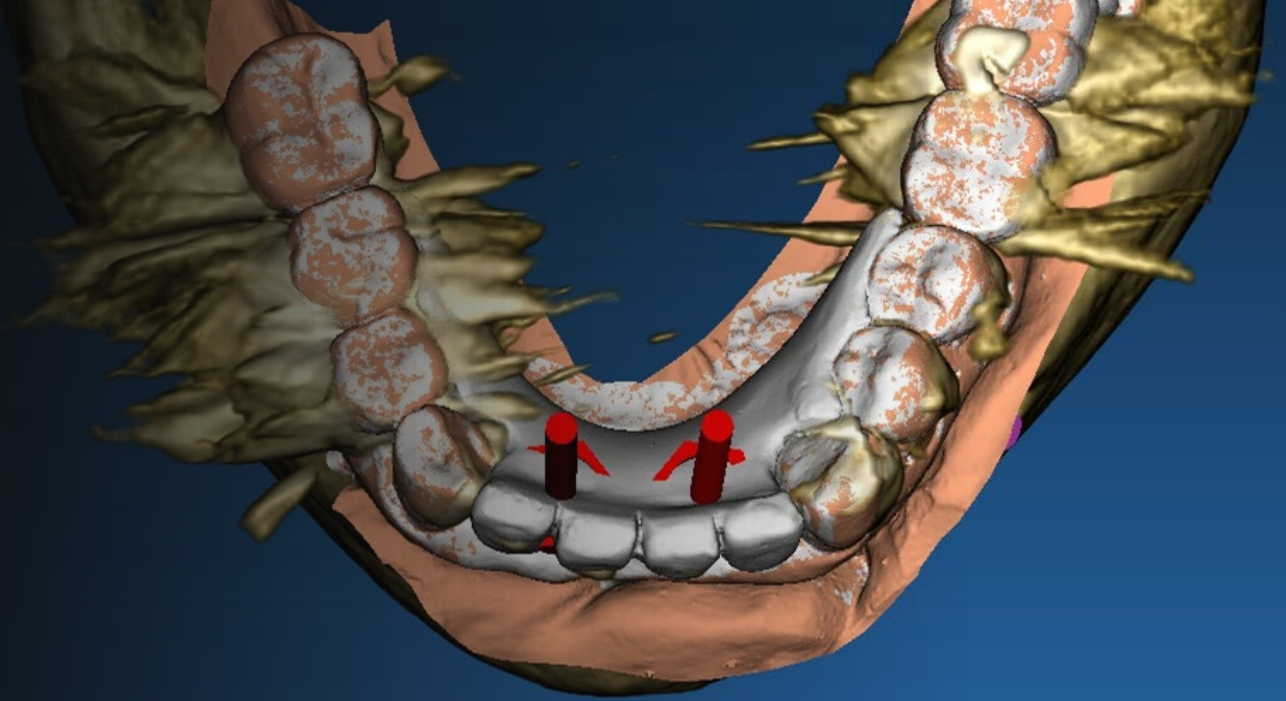


Boccola LARGE

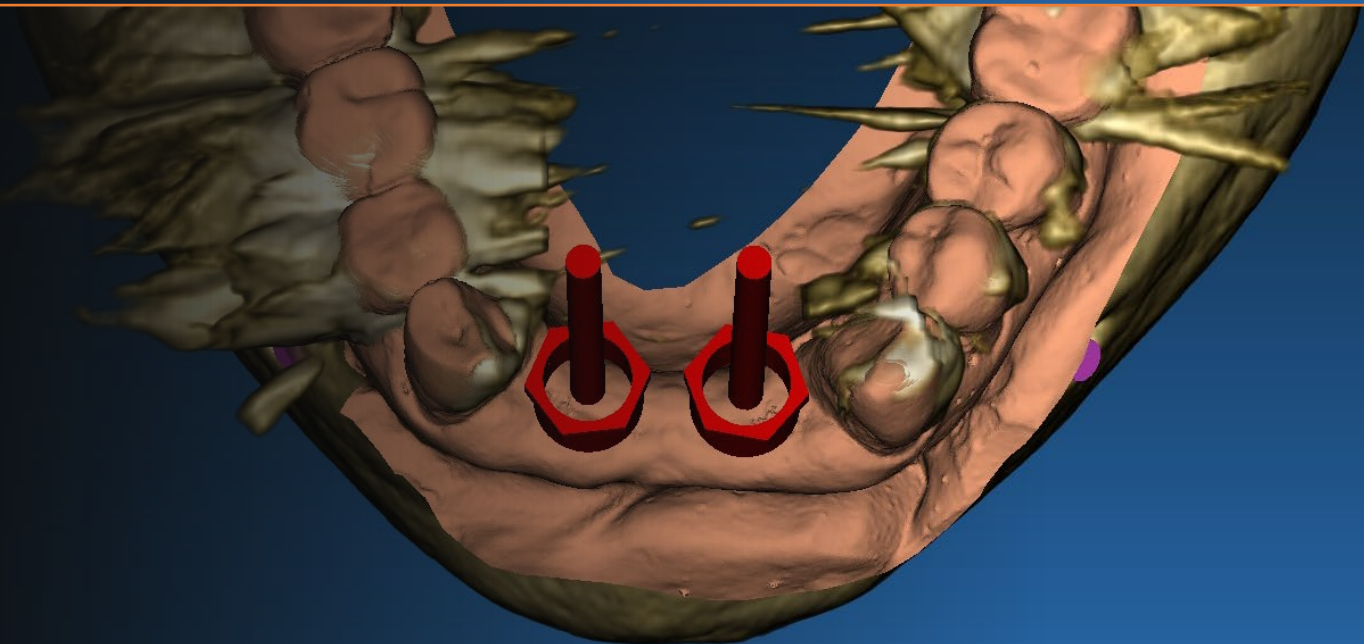
Ø5.5

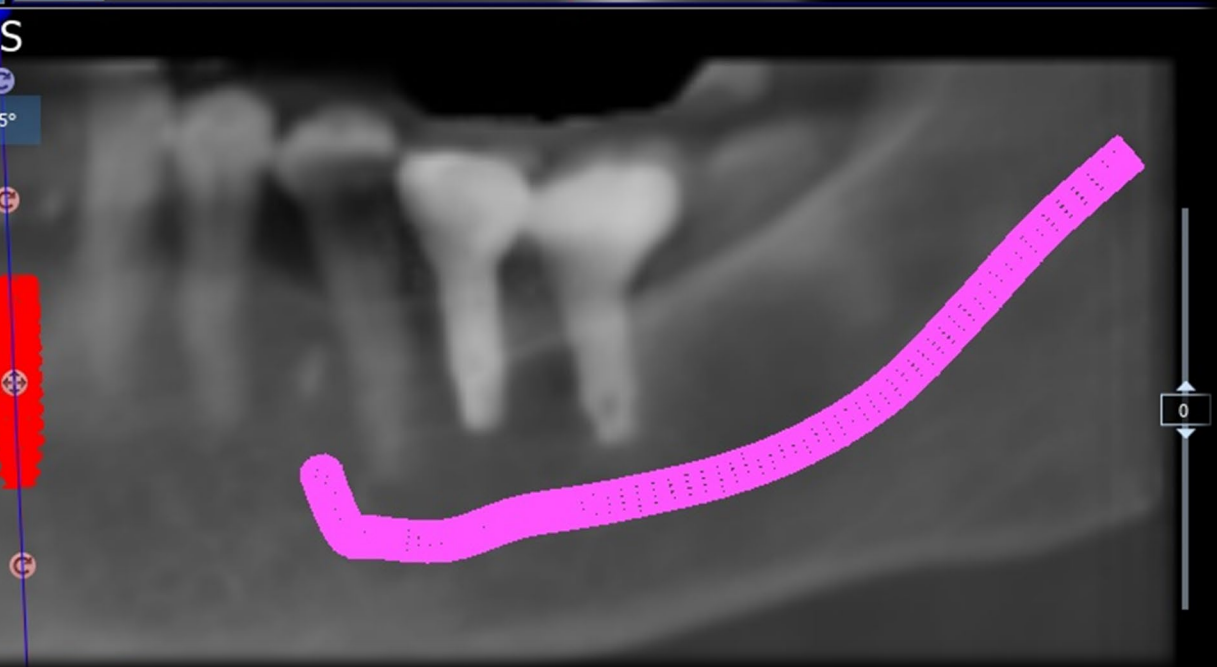
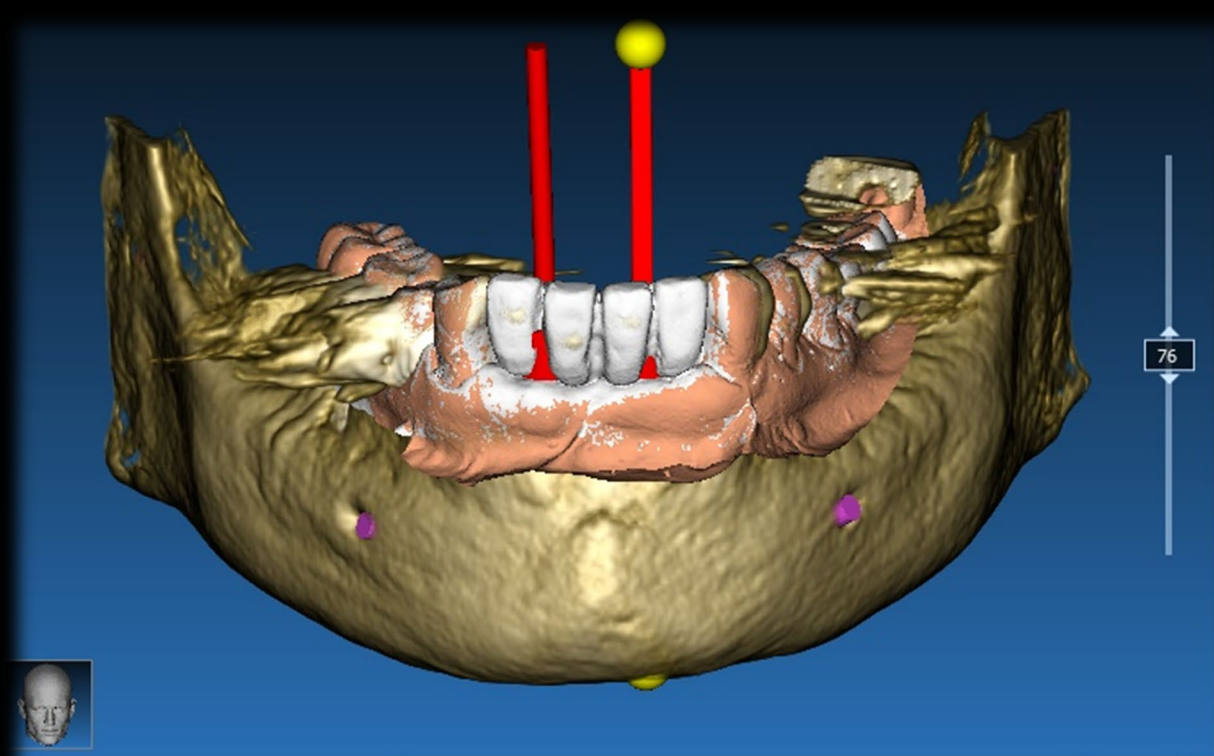


**BOCCOLA
PICCOLA Ø4.15**

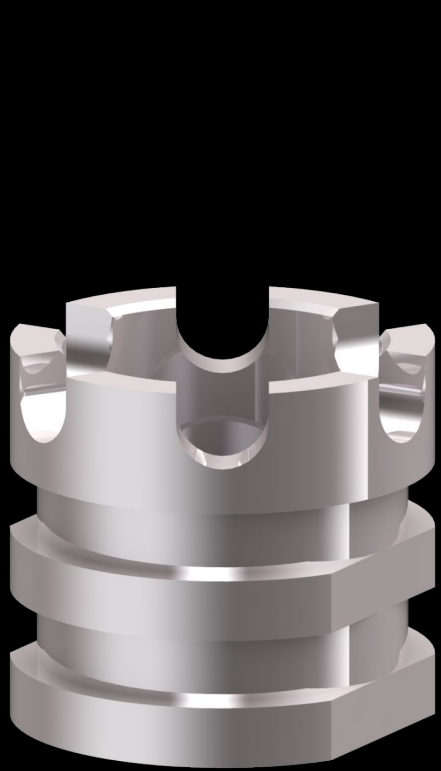


**LIMITI DELLA
CHIRURGIA GUIDATA**

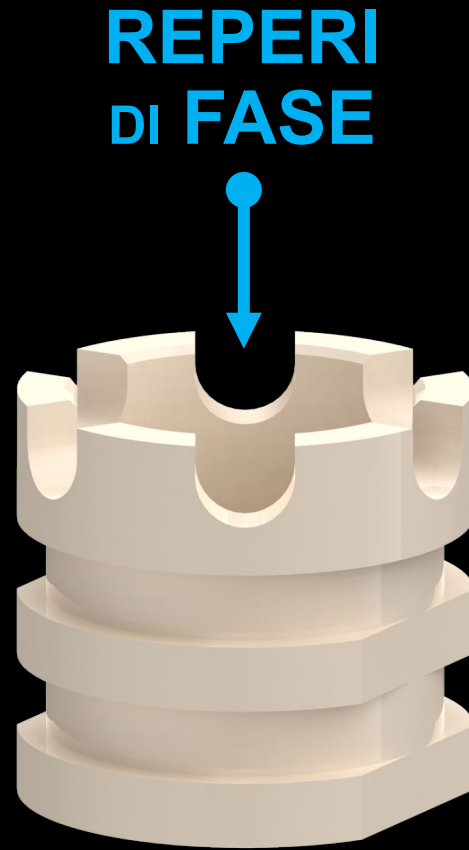
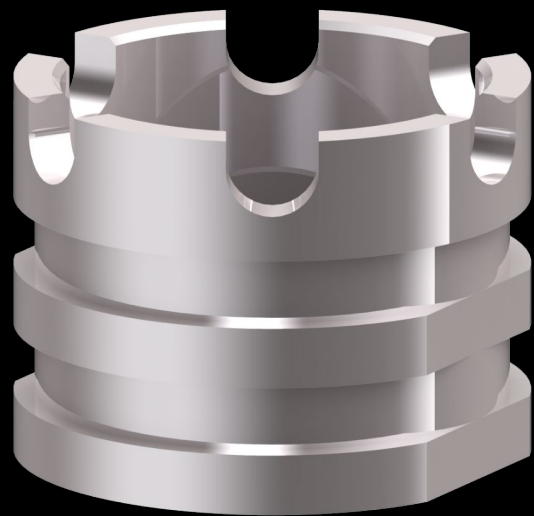




OPZIONI DI MATERIALE



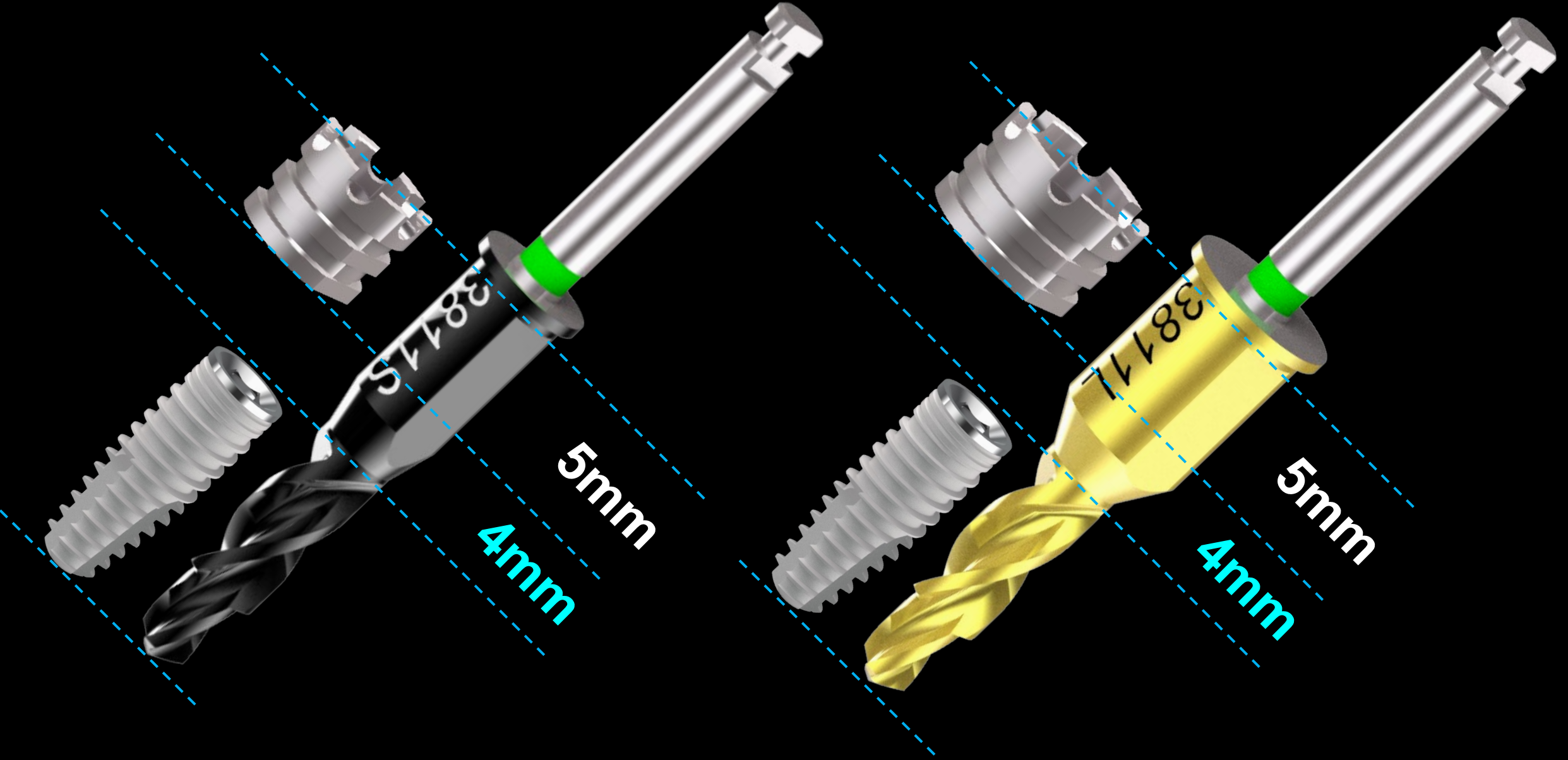
Titanio Gr5



Tecapeek Medicate



LE DIMENSIONI FISSE IN CHIRURGIA GUIDATA



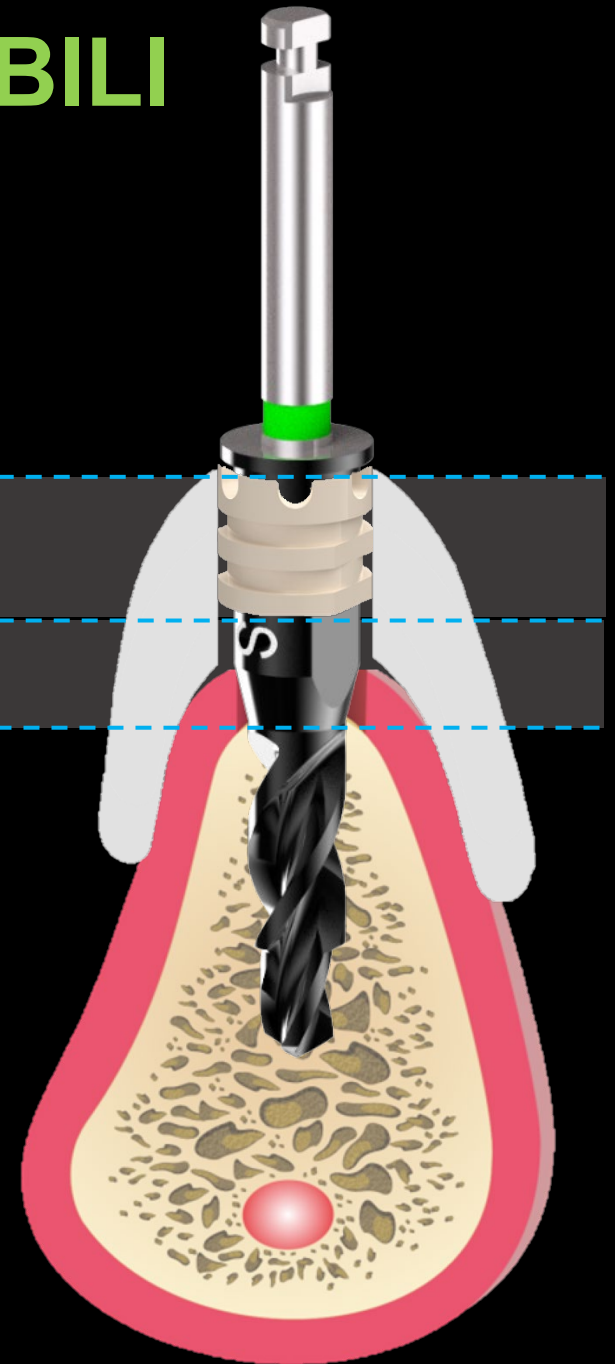
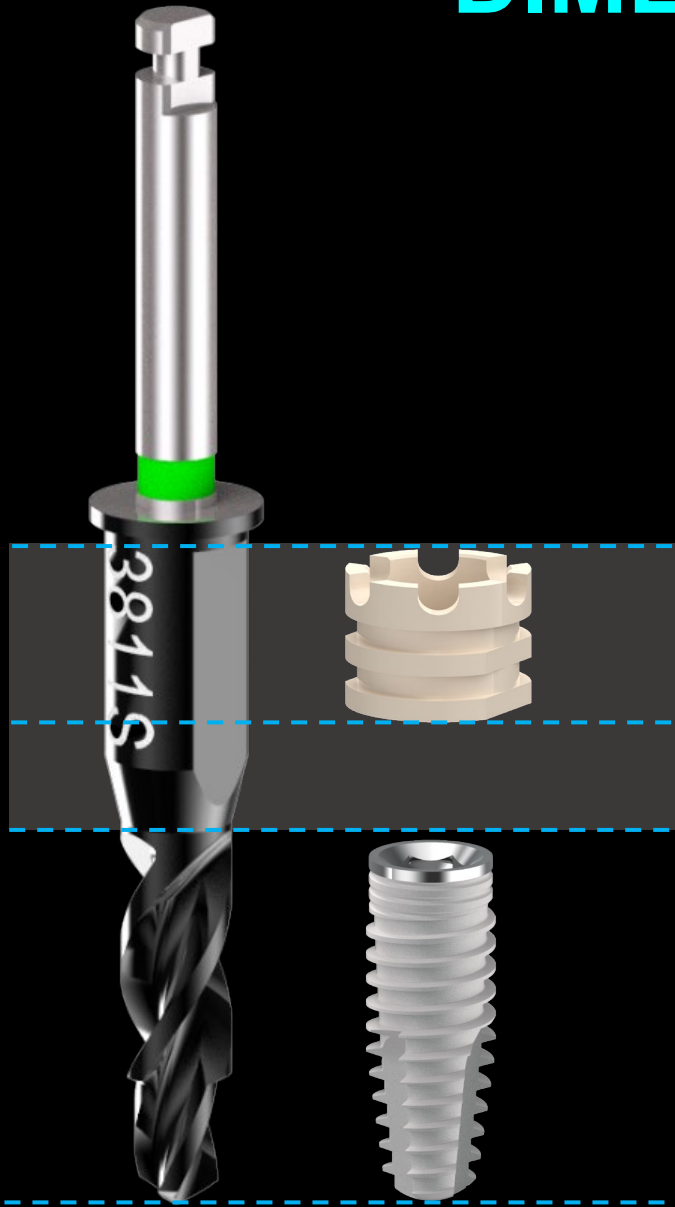
DIMENSIONI FISSE e VARIABILI IN CHIRURGIA GUIDATA

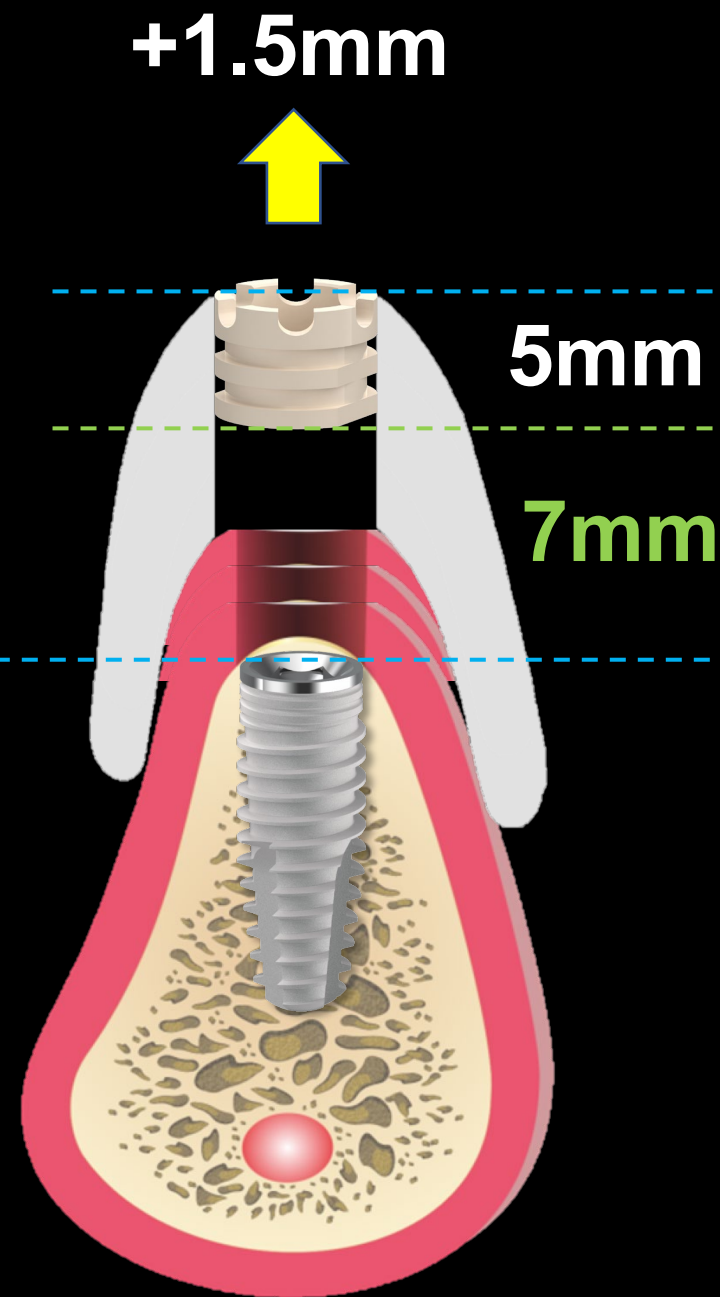
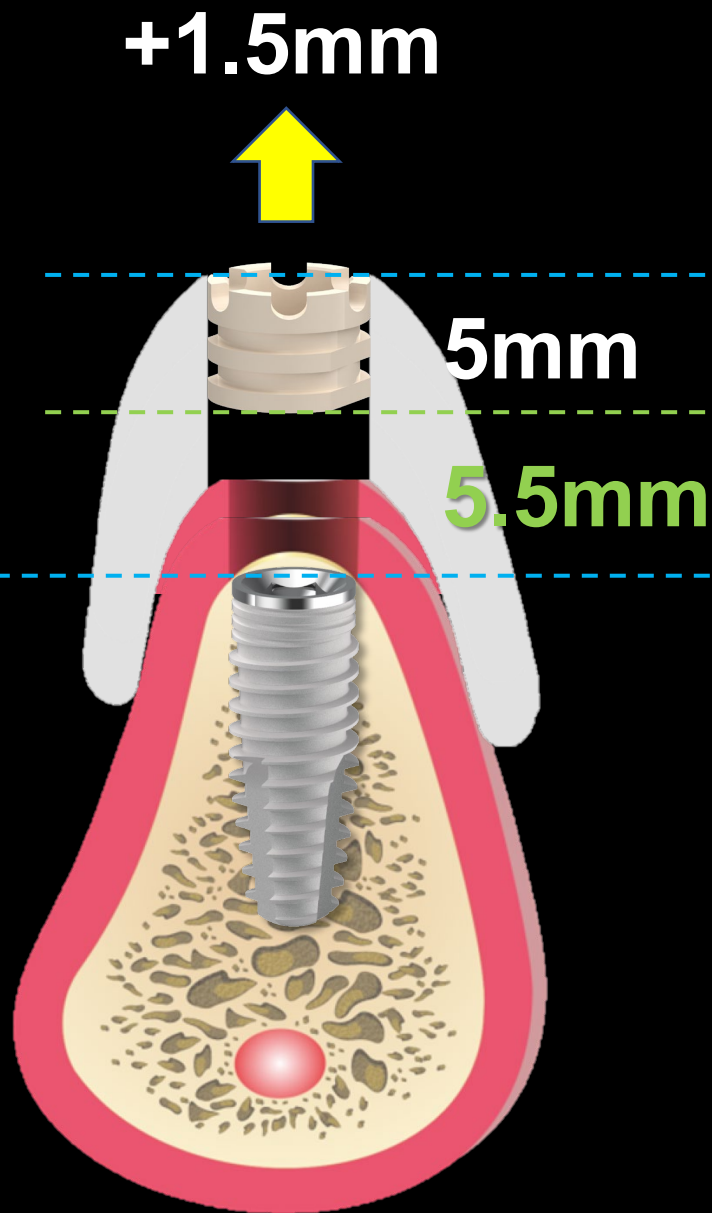
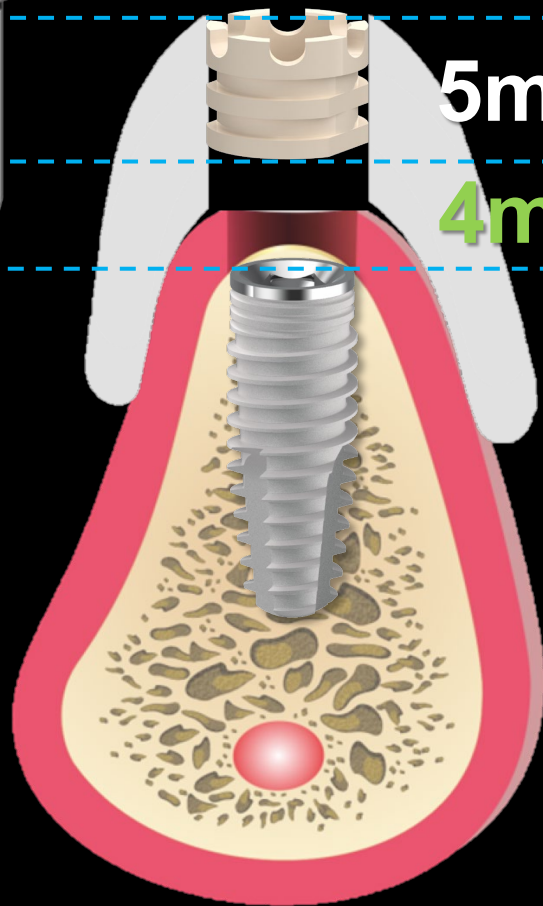
FISSA

5mm

VARIABILE

4mm

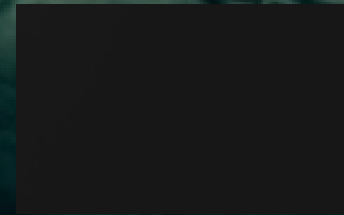
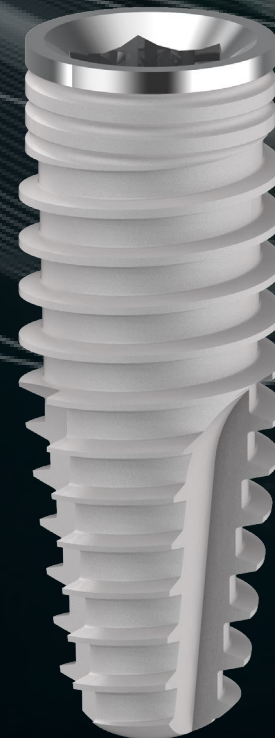




REVOLUTION

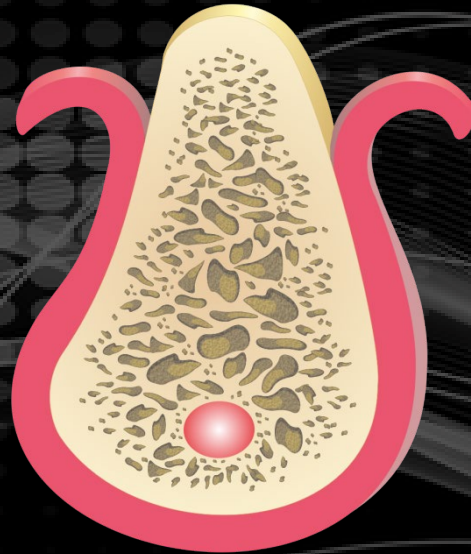
ESEMPIO DI SEQUENZA CHIRURGICA

IMPIANTO
IK3811

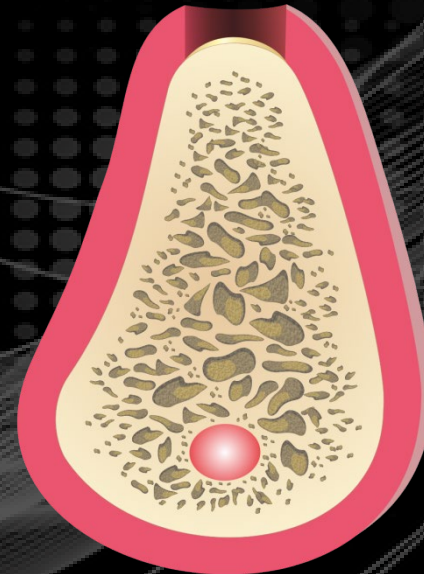


APPROCCIO CHIRURGICO

CON LEMBO



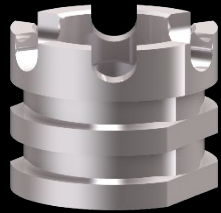
SENZA LEMBO



- Possibilità di Osseoplastica
- Completa visibilità e controllo
- Maggiore Raffreddamento osseo
- Opzione, quando non abbiamo sufficiente gengiva aderente

- Flapless con Mucotomo Calibrato
- Minor sanguinamento
- Minore Morbilità + Comfort Paziente
- Niente sutura

IK 3811

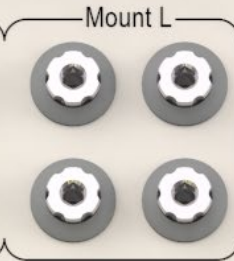
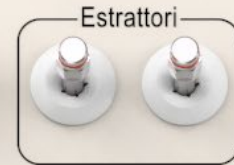
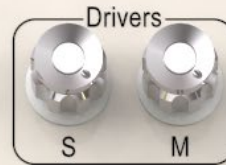


Ø5.5 mm
LARGA

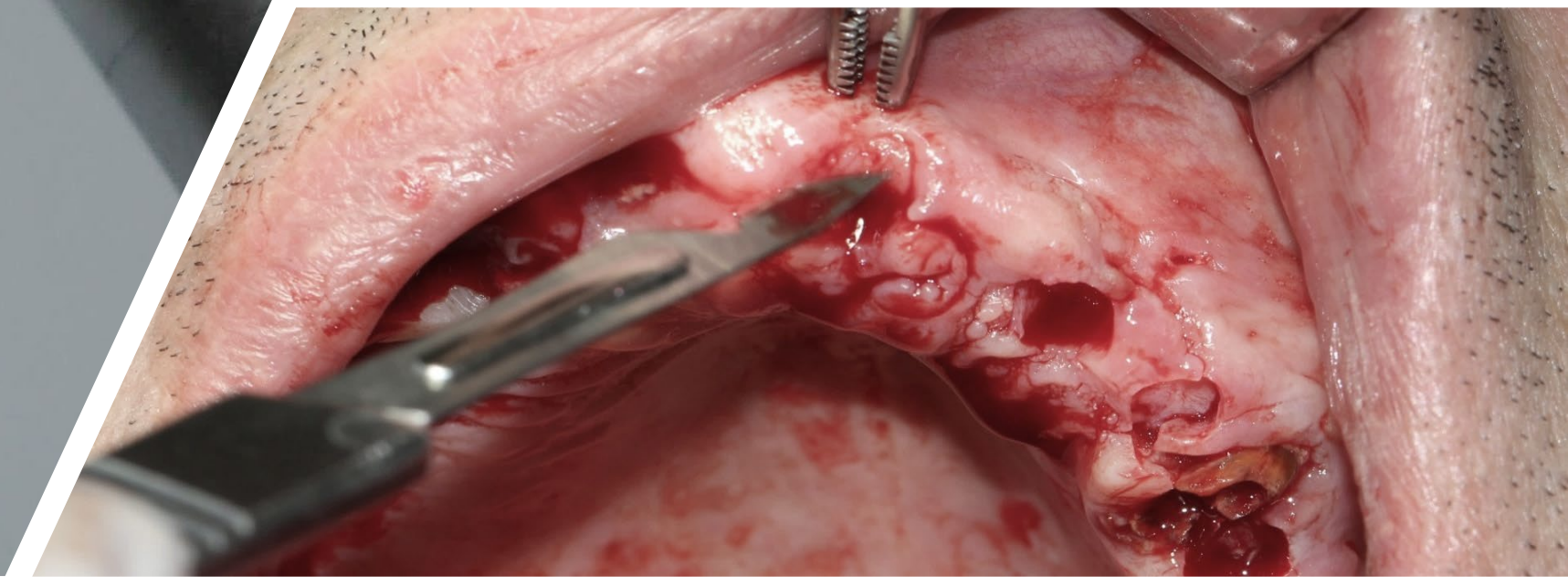
1 MUCOTOMO 55 L

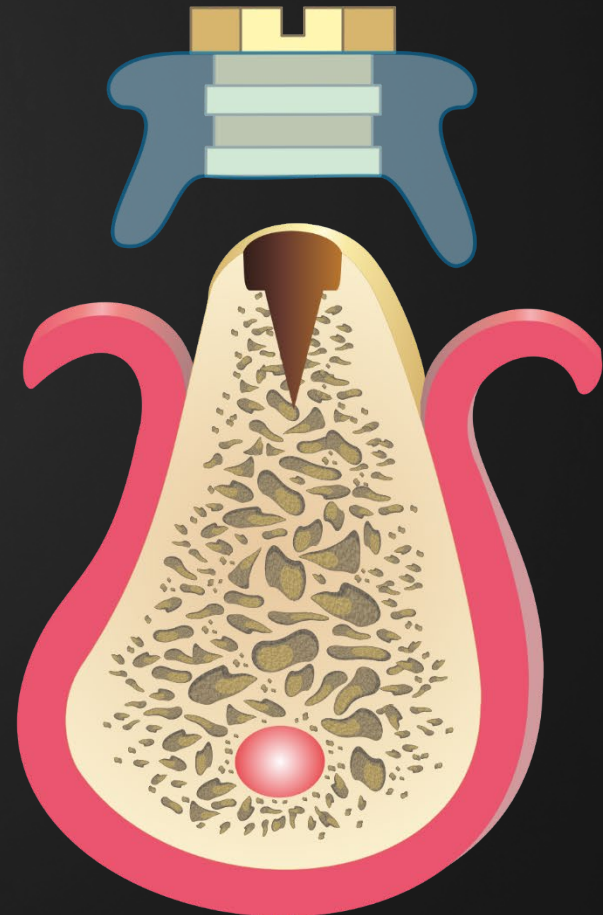
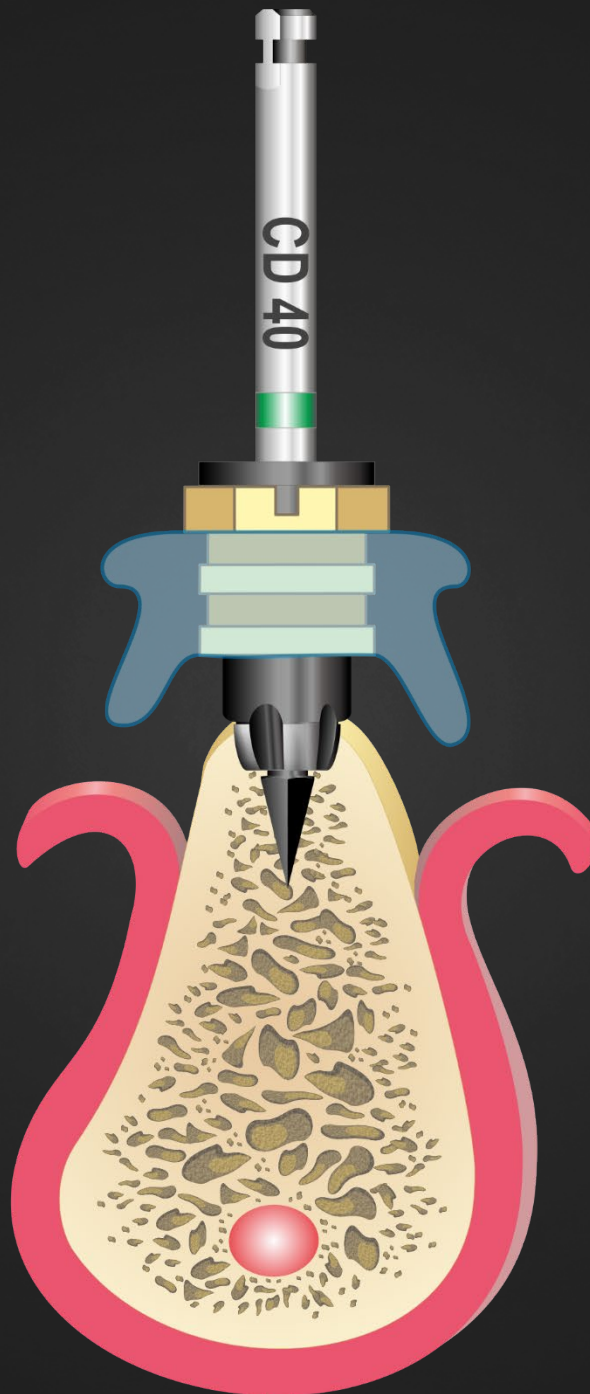
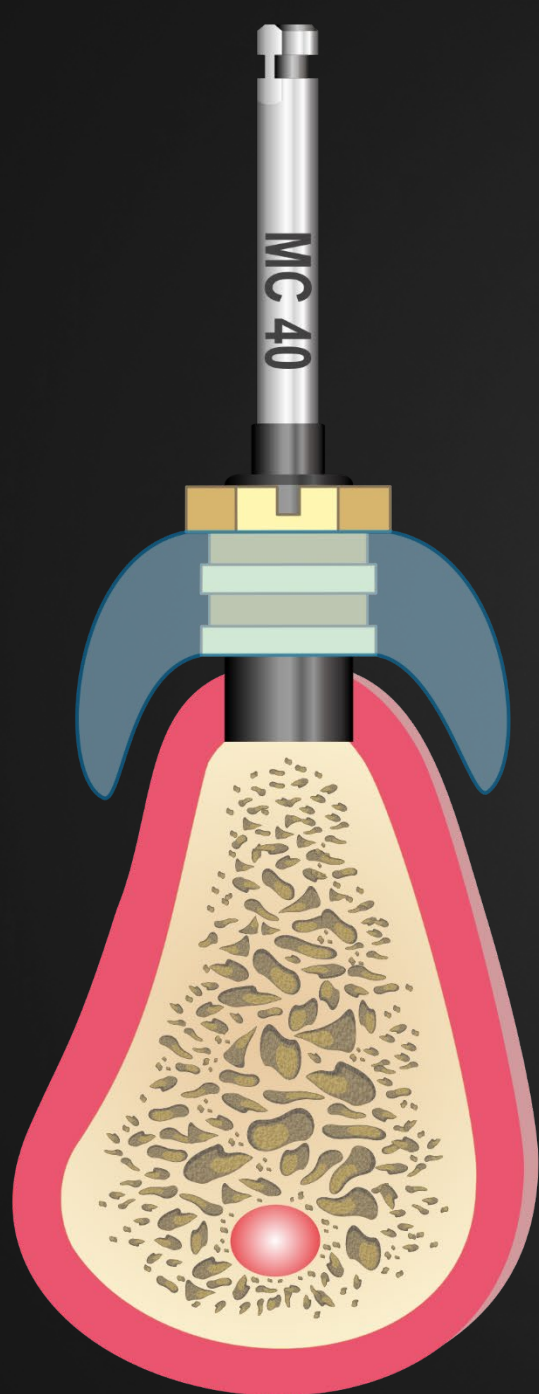
2 FRESA CORTICALE 40 L

RESISTA[®]
COMPUTER GUIDED SURGERY

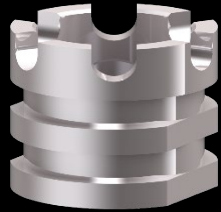
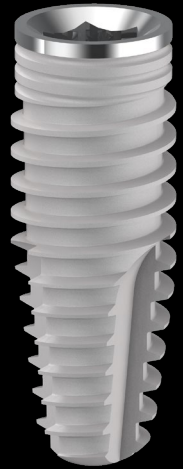


	Pilota	Impianto 3.4	Impianto 3.8	Impianto 4.2	4.6	5.0
8.5						
10						
11.5						
13						
15						
	S L	S L	S L	S L	L	L





IK 3811



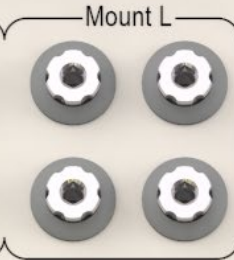
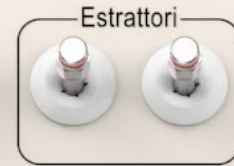
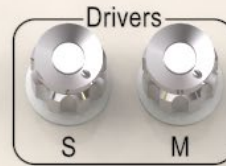
Ø5.5 mm
LARGA

1 MUCOTOMO 55 L

2 FRESA CORTICALE 40 L

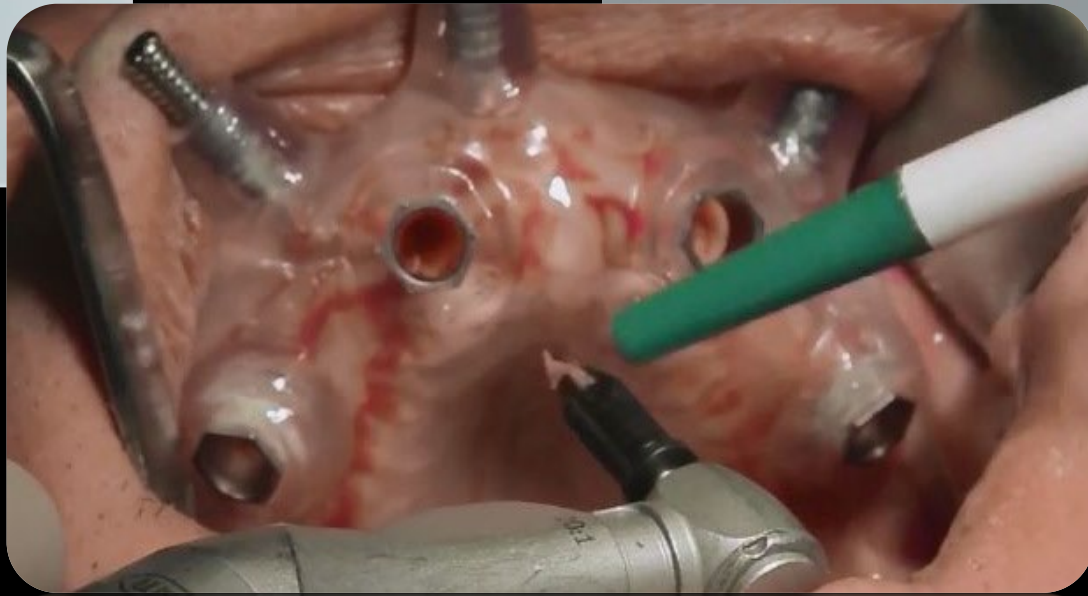
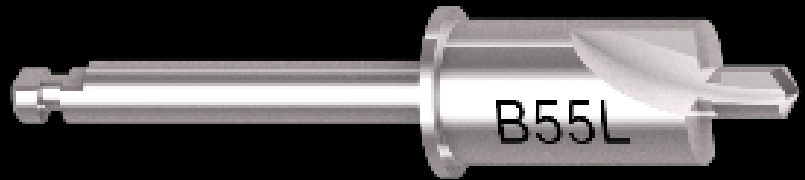
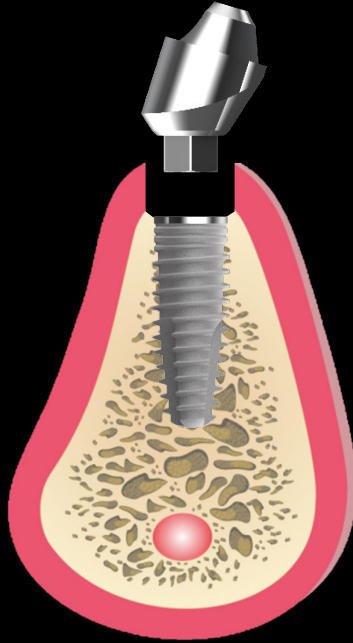
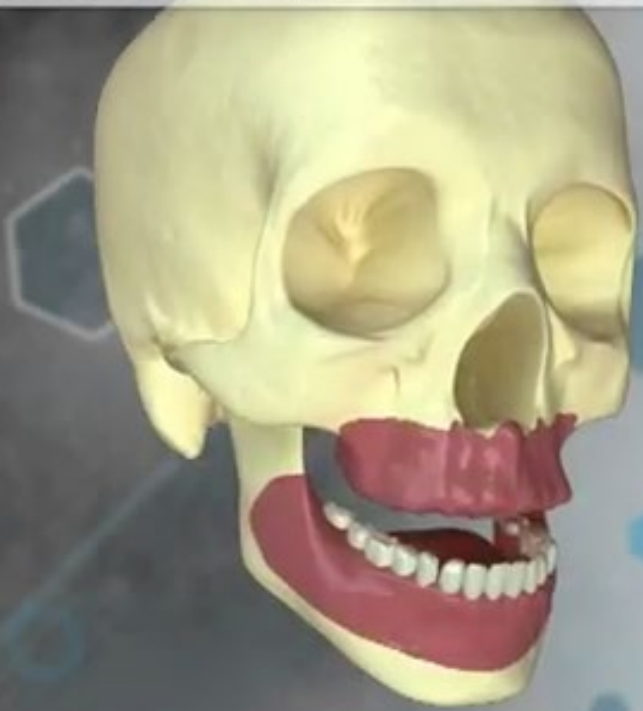
3 BONE MILL

RESISTA[®]
COMPUTER GUIDED SURGERY

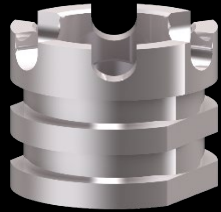
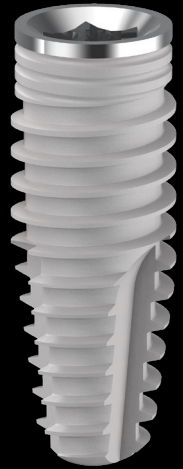


	Pilota	Impianto 3.4	Impianto 3.8	Impianto 4.2	4.6	5.0
8.5						
10						
11.5						
13						
15						
	S L	S L	S L	S L	L	L

Procedura Chirurgia Guidata 3DIEMME RealGUIDE



IK 3811



Ø5.5 mm
LARGA

1 MUCOTOMO 55 L

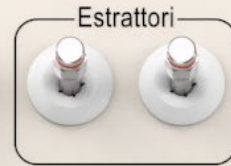
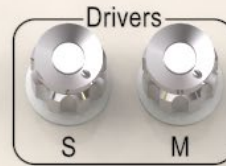
2 FRESA CORTICALE 40 L

3 BONE MILL

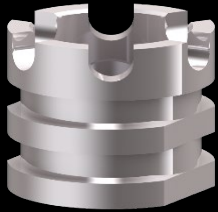
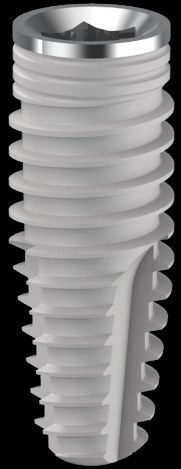
4 FRESA PILOTA H 8.5MM

5 FRESA PILOTA H 11.5MM

RESISTA[®]
COMPUTER GUIDED SURGERY



IK 3811



Ø5.5 mm
LARGA

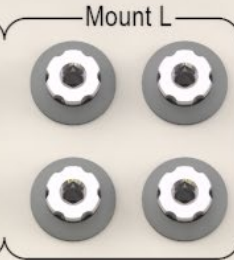
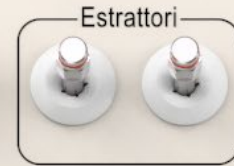
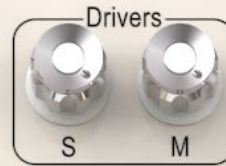
6 FRESA 34 H 8.5MM

7 FRESA 34 H 11.5MM

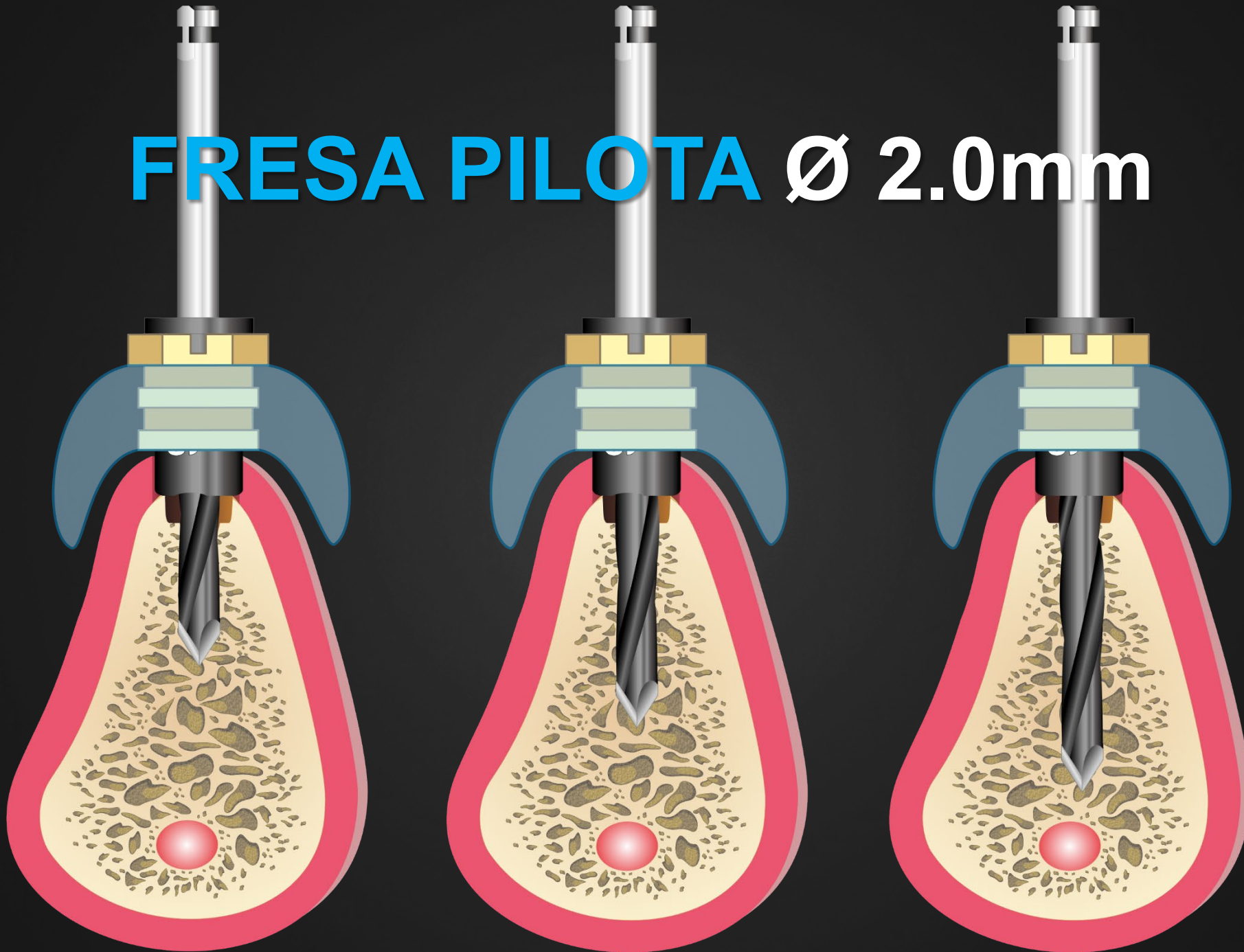
8 FRESA 38 H 8.5MM

9 FRESA 38 H 11.5MM

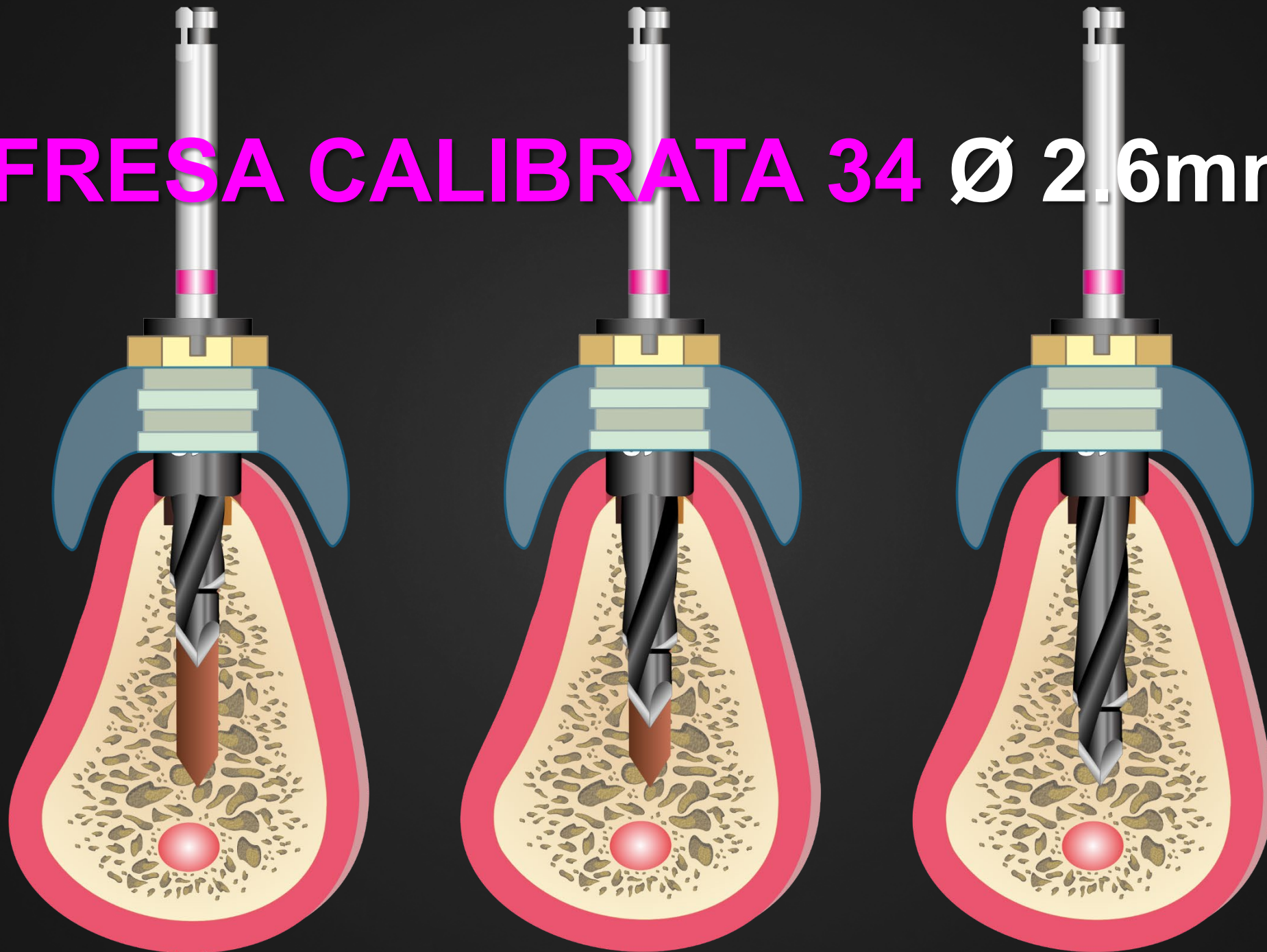
RESISTA®
COMPUTER GUIDED SURGERY



FRESA PILOTA Ø 2.0mm



FRESA CALIBRATA 34 Ø 2.6mm



FRESA CALIBRATA 38 Ø 3.2mm

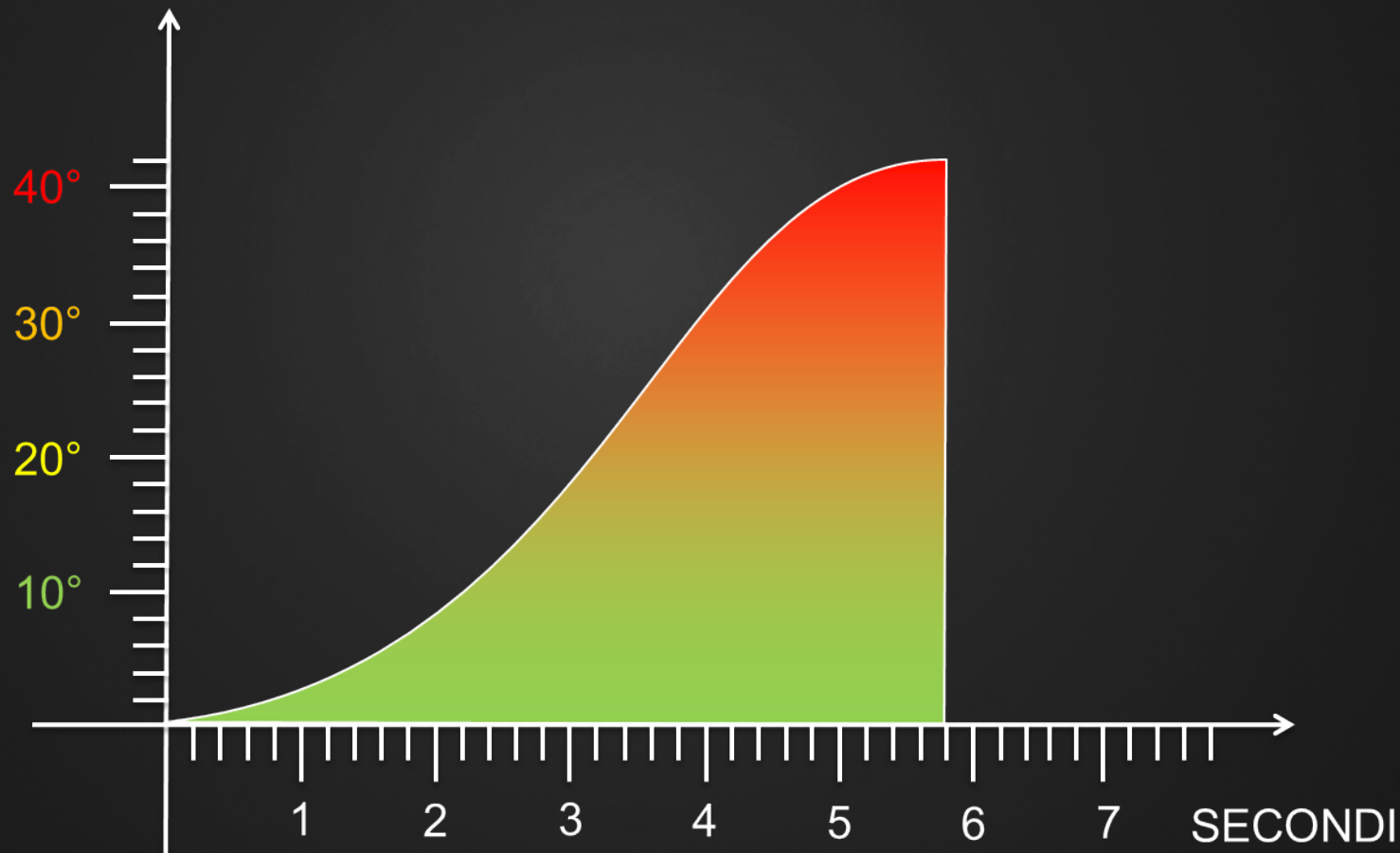


LAVAGGI FREQUENTI CON FISIOLGICA



IL CONTROLLO DEL CALORE

ATTRITO GENERATO DA UNO
STRUMENTO ROTANTE PERFORANTE



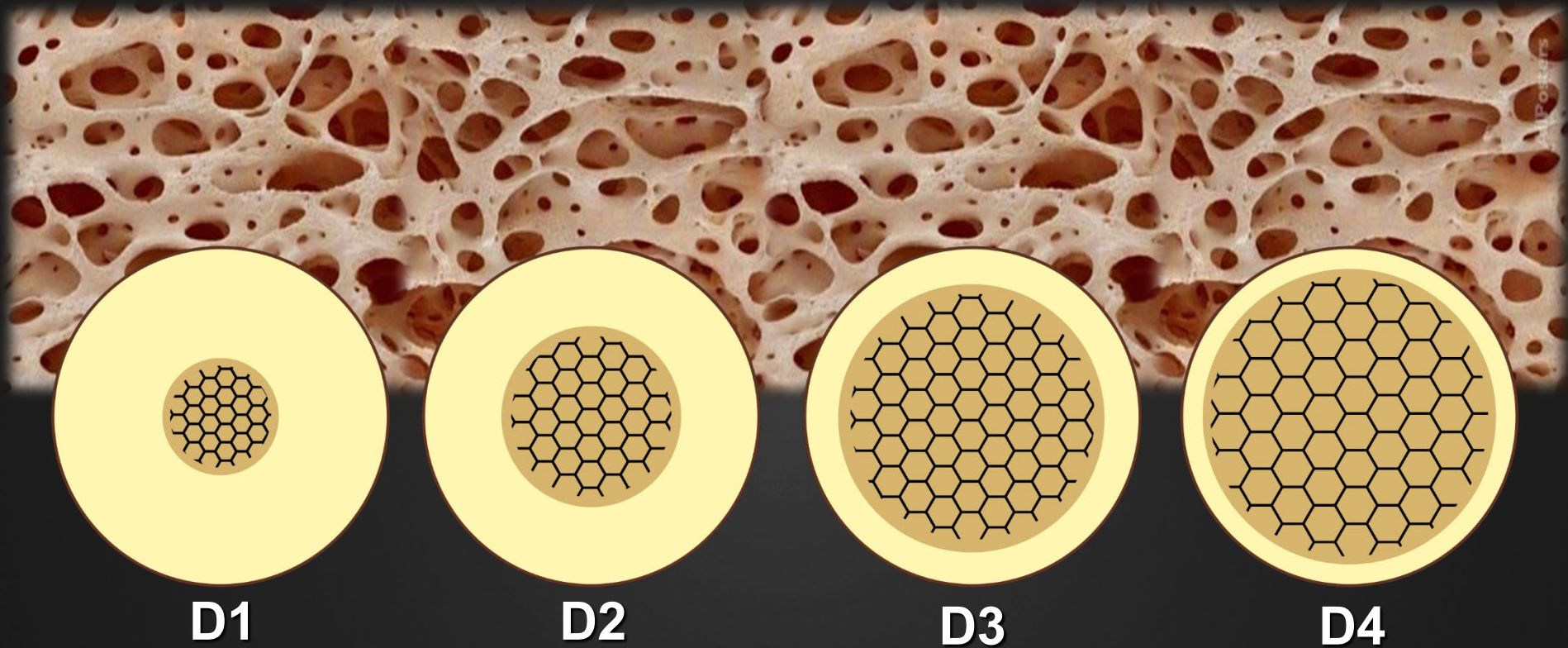
IL CONTROLLO DEL CALORE



MOVIMENTO **VAI**

MOVIMENTO **VIENI**

BONE QUALITY



Bone classification: clinical-histomorphometric comparison.

Trisi P, Rao W.

Clin Oral Implants Res. 1999 Feb;10(1):1-7. doi: 10.1034/j.1600-0501.1999.100101.x.

VARIANTE DI PROTOCOLLO IMPIANTO IK42

IN FUNZIONE DELLA QUALITÀ OSSEA

D4



D3/D2



D1



VARIANTE DI PROTOCOLLO IMPIANTO IK42

INFUNZIONE DELLA QUALITÀ OSSEA

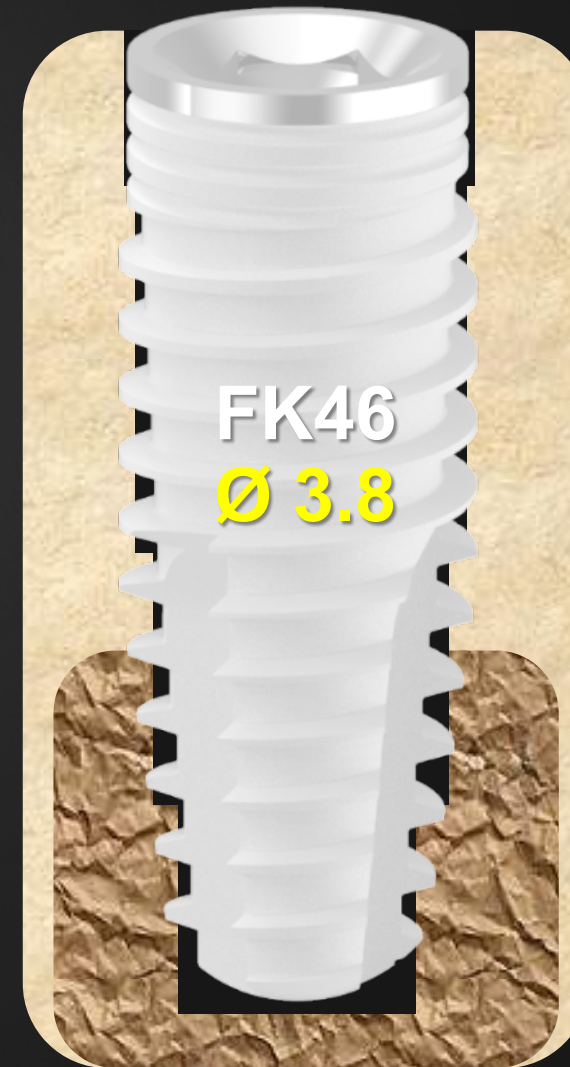
D4



D3/D2







D1



OSSEODENSIFICAZIONE



VT1525	VT2535	VT3545	VT4555
			
(2,0 mm)	(3,0 mm)	(4,0 mm)	(5,0 mm)

VT1828	VT2838	VT3848	VT4858
			
(2,3 mm)	(3,3 mm)	(4,3 mm)	(5,3 mm)





MODULAR SURGICAL DRILLING

La Rotazione Antioraria

Invertendo Le Forze In Gioco

Genera 3 Effetti Differenti

Sulla Pratica Chirurgica Di Preparazione

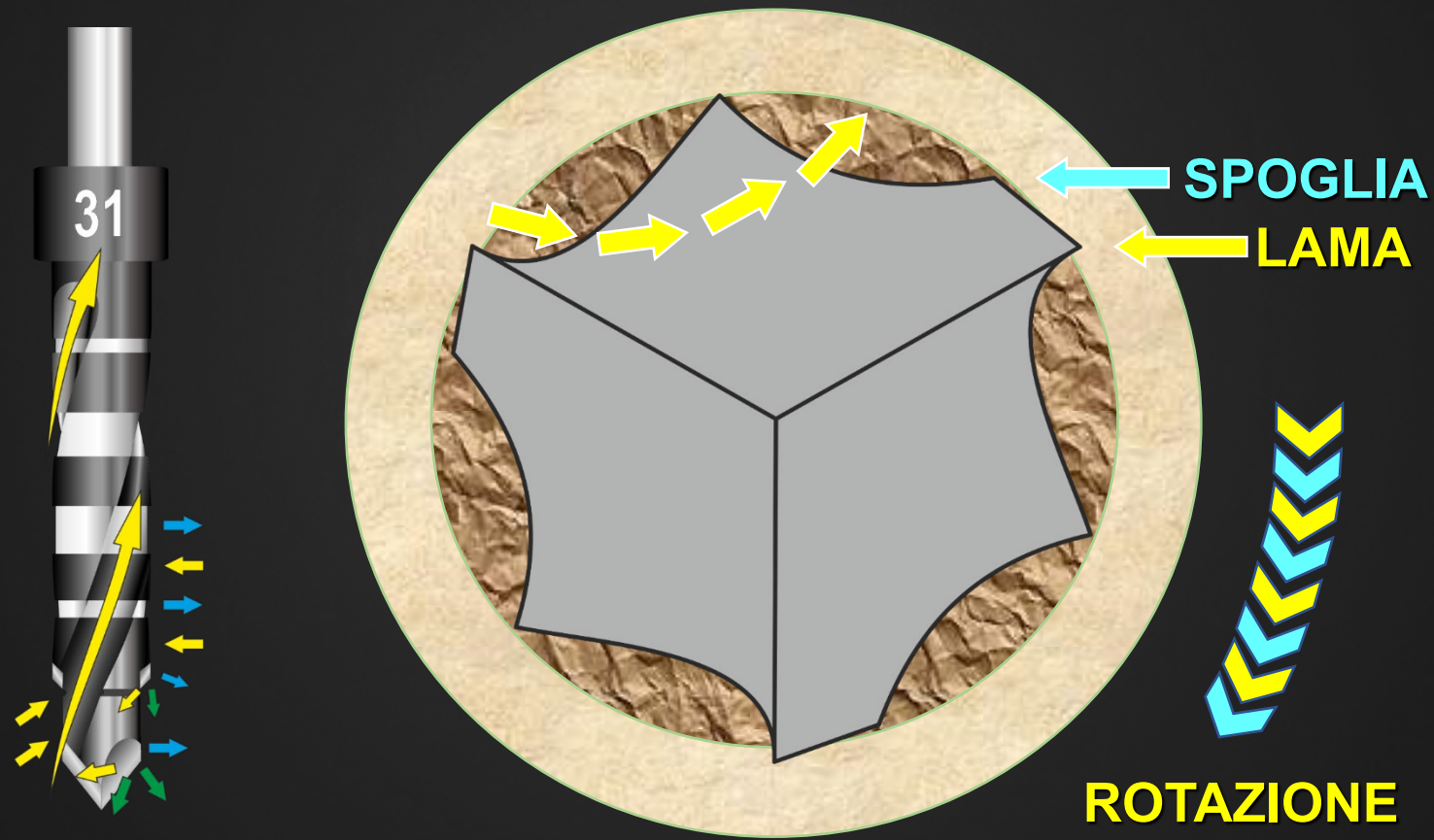
3

EFFETTI

- 1) Spinta anteriore e laterale di ciò che la punta asporta (osso), più tutti i liquidi in gioco, sangue e fisiologica
- 2) Espulsione più “effetto martello” della fresa stessa
- 3) Riduzione dell’efficienza di taglio.

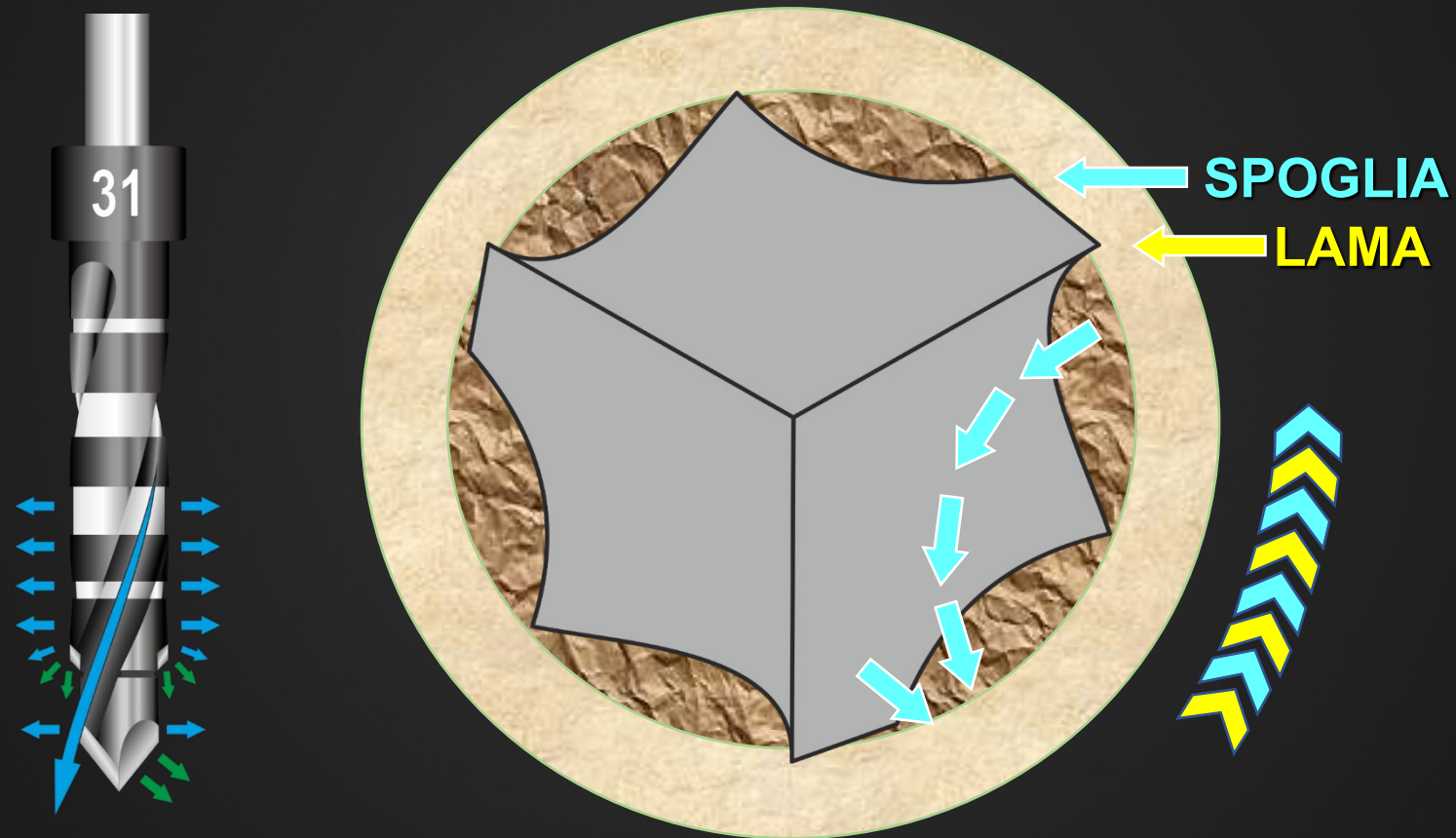
ASPORTAZIONE ORARIA

TAGLIARE e ASPIRARE



OSSEODENSIFICAZIONE ANTIORARIA

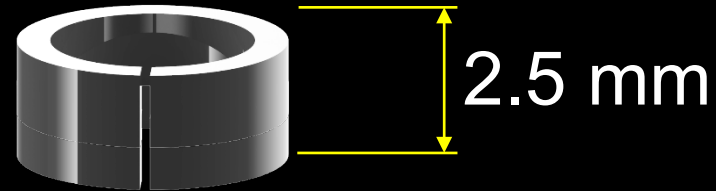
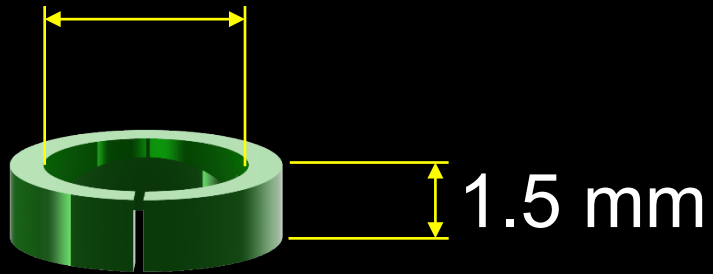
SCHIACCIARE e SPINGERE



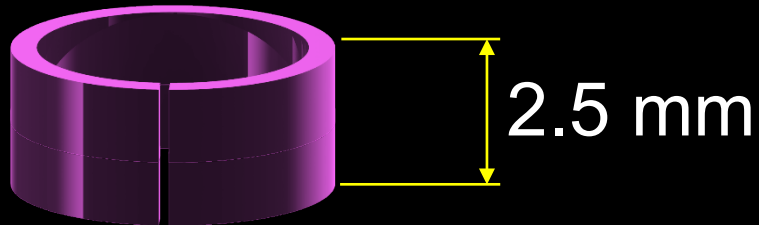
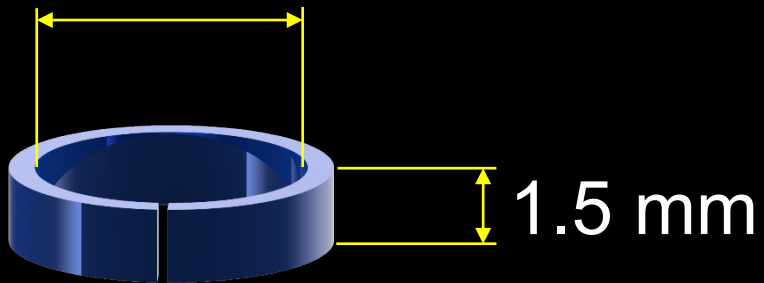
ANELLI SPAZIATORI OPZIONALI

RIDUCONO LA PROFONDITÀ
DI LAVORO DELLA FRESA

Ø4.15 mm



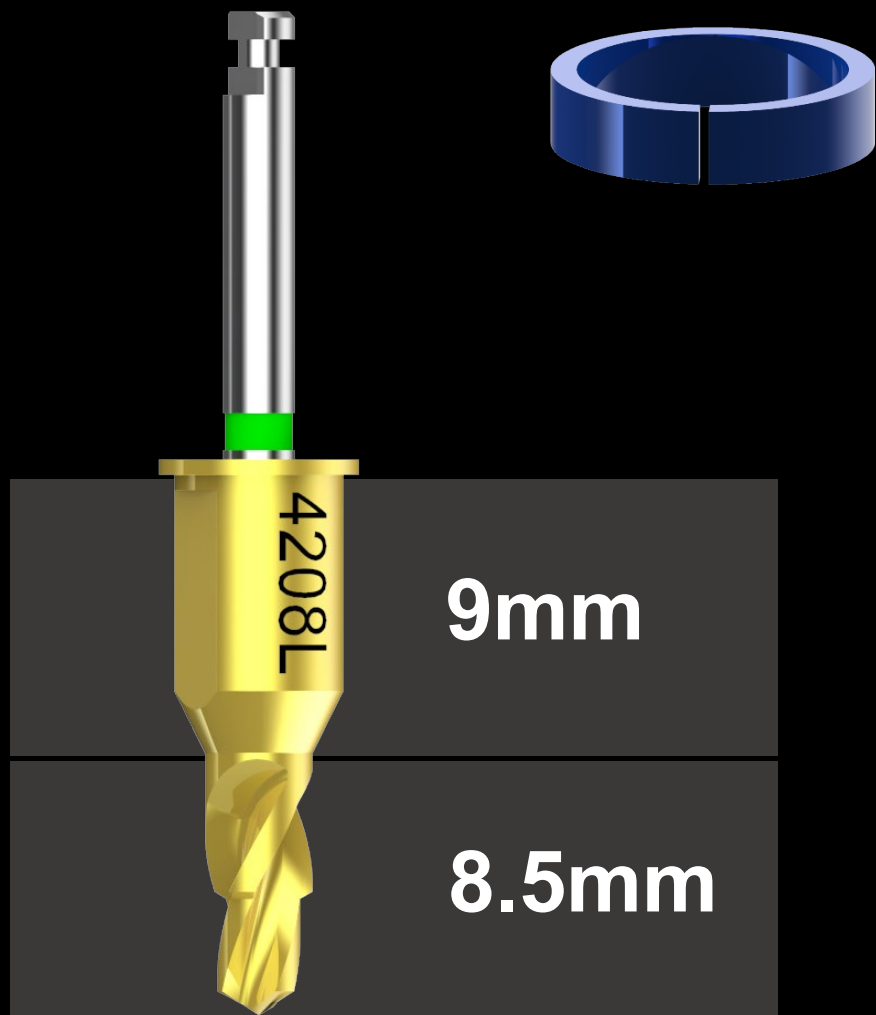
Ø5.5 mm



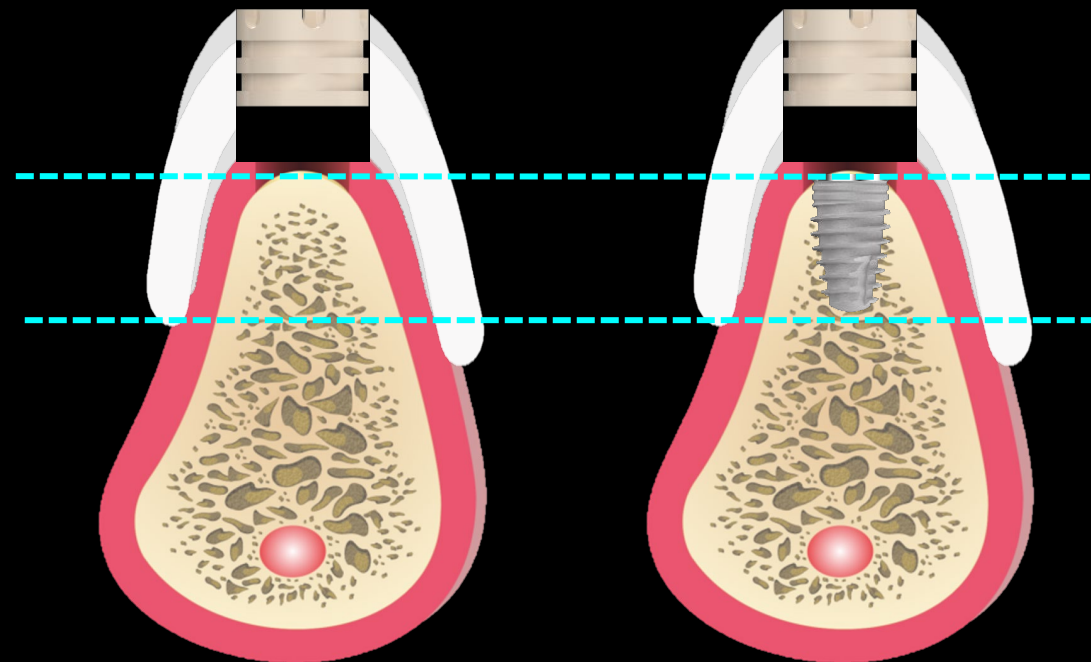
Fino alla battuta
dello stop fresa



FRESA H 8.5 MM + ANELLO H 1.5 MM
FORO PROFONDITÀ 7 MM



SHORT
7mm





Mounter

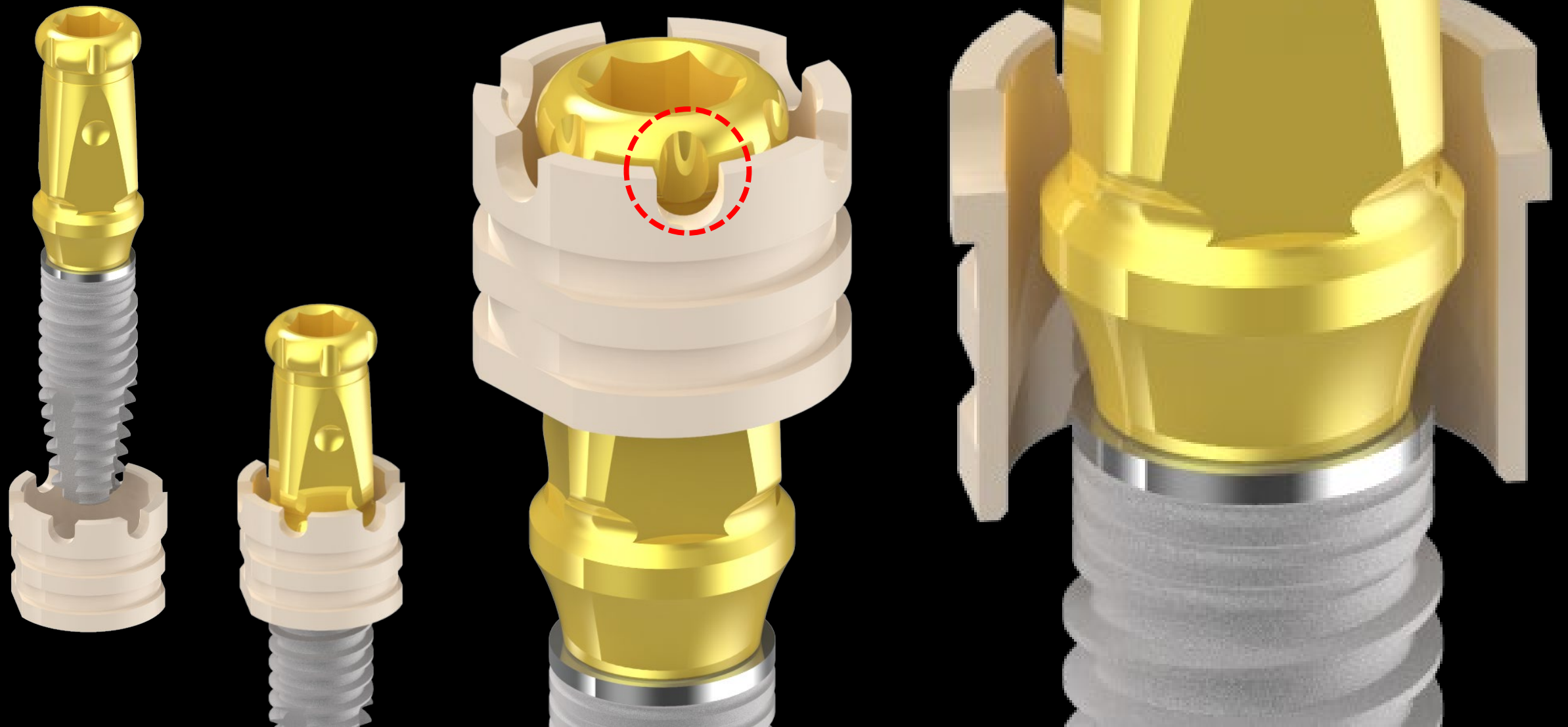
REVOLUTION

PRELIEVO ED AVVITAMENTO STANDARD

IL MOUNTER **MTA** PREASSEMBLATO



MOUNTER **MTA** PREASSEMBLATO



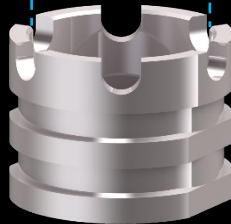
MOUNTER CALIBRATO STOPPATO

ALTERNATIVA CHIRURGICA

Ø4.15



Ø5.5



REPERE DI FASE

STOP

GUIDA

SCARICO

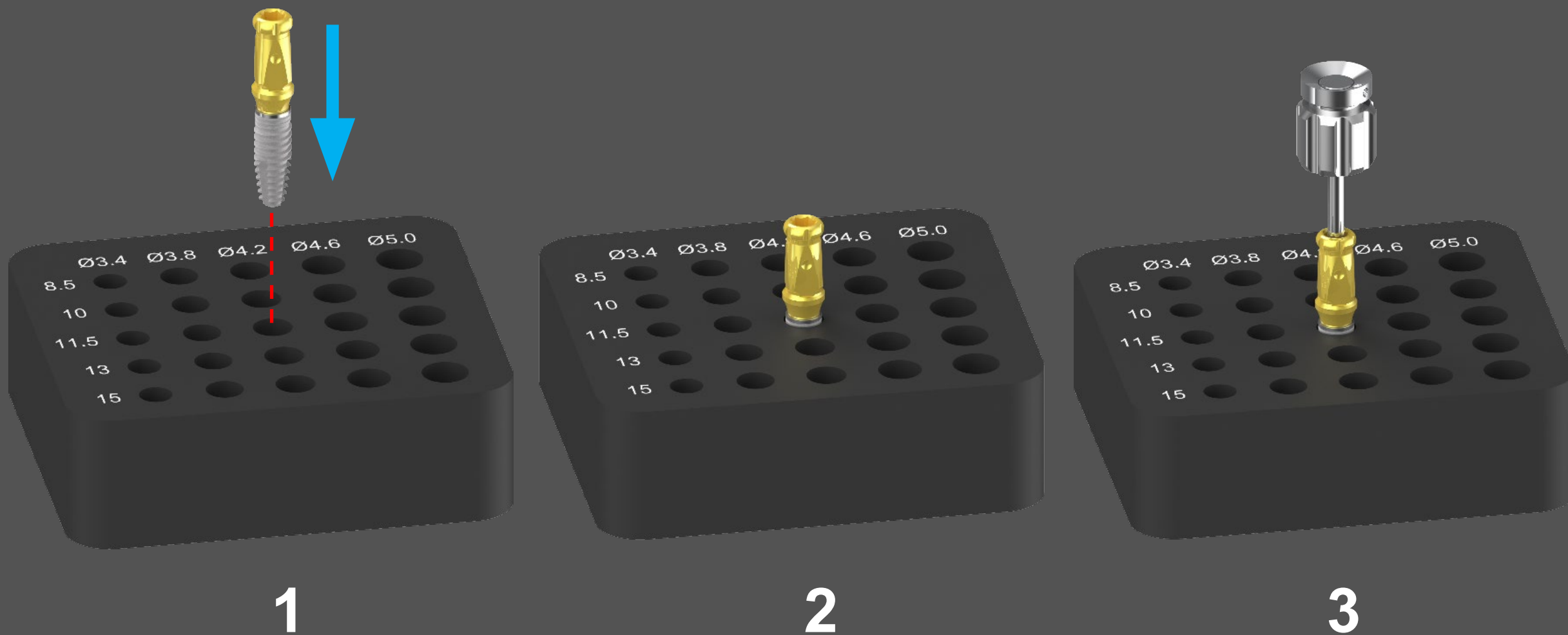
FACCIA ESAGONO
IN FASE

MOUNTER CALIBRATO



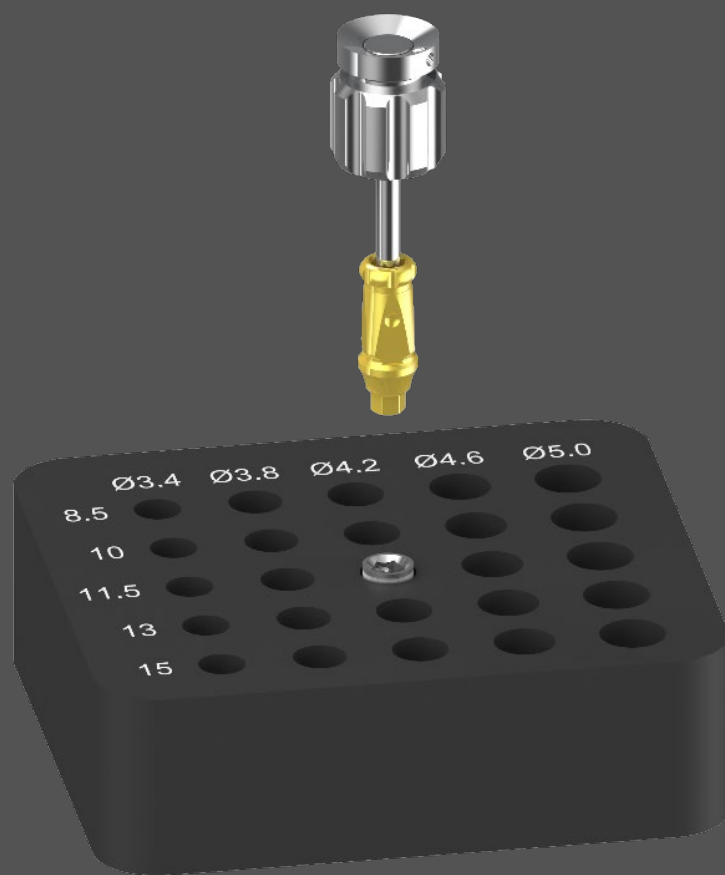
BASE IN TITANIO RIVESTITA DLC

RIMOZIONE DEL MOUNTER STANDARD

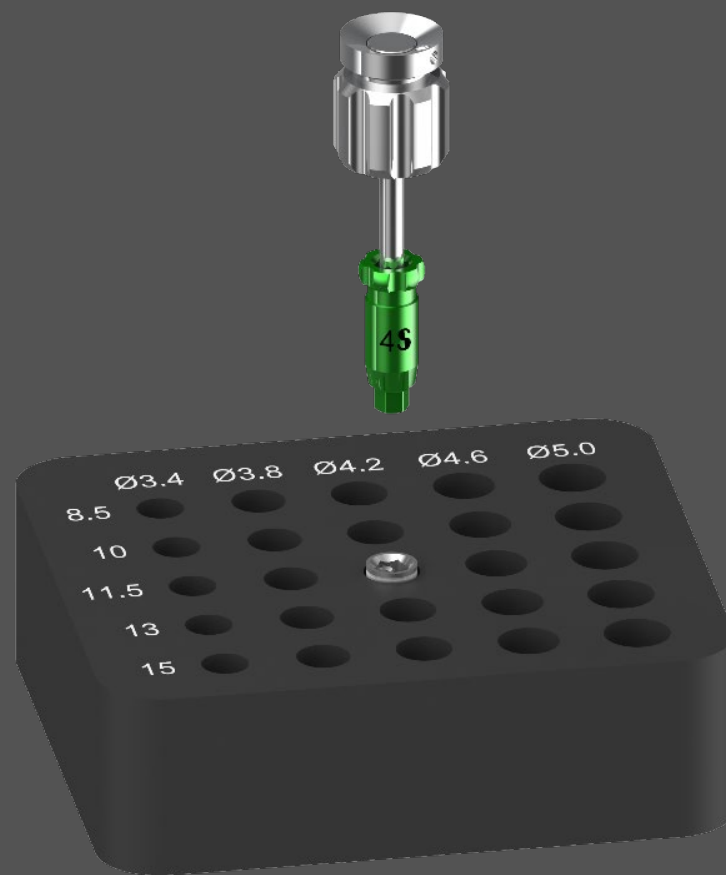


BASE IN TITANIO RIVESTITA DLC

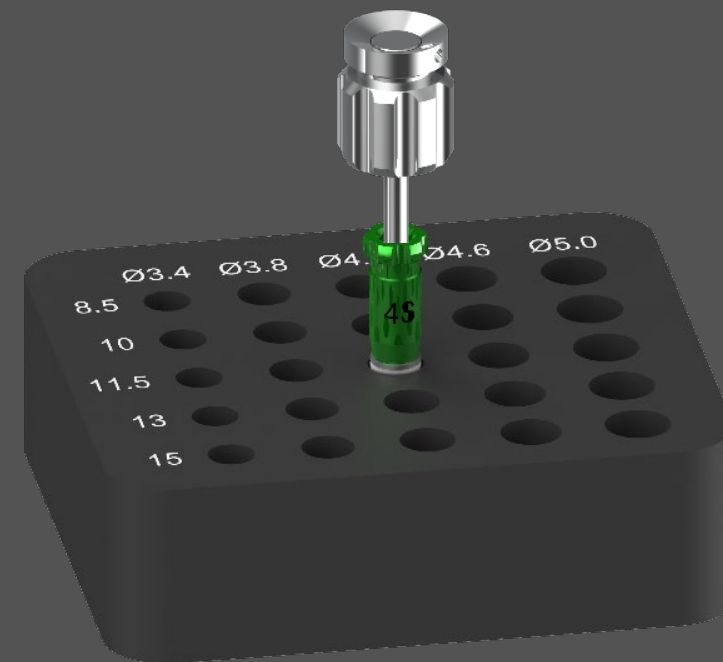
RIMOZIONE DEL MOUNTER STANDARD



4

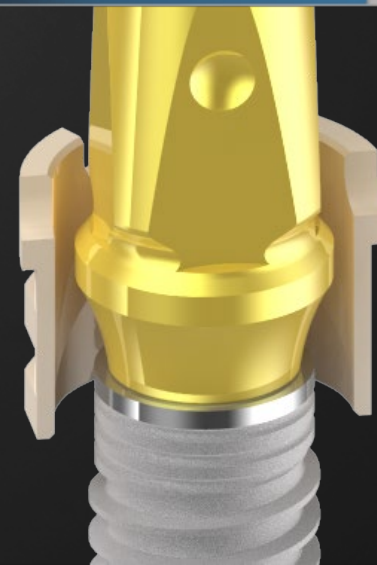
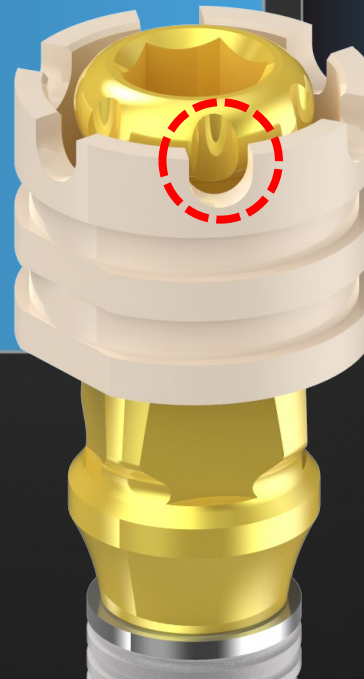
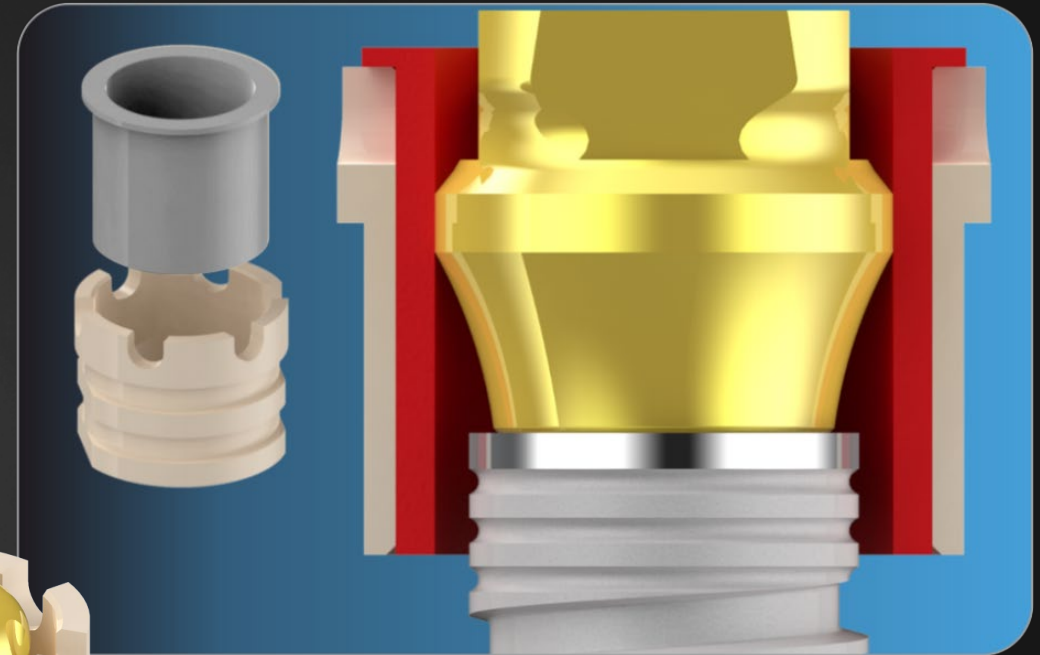
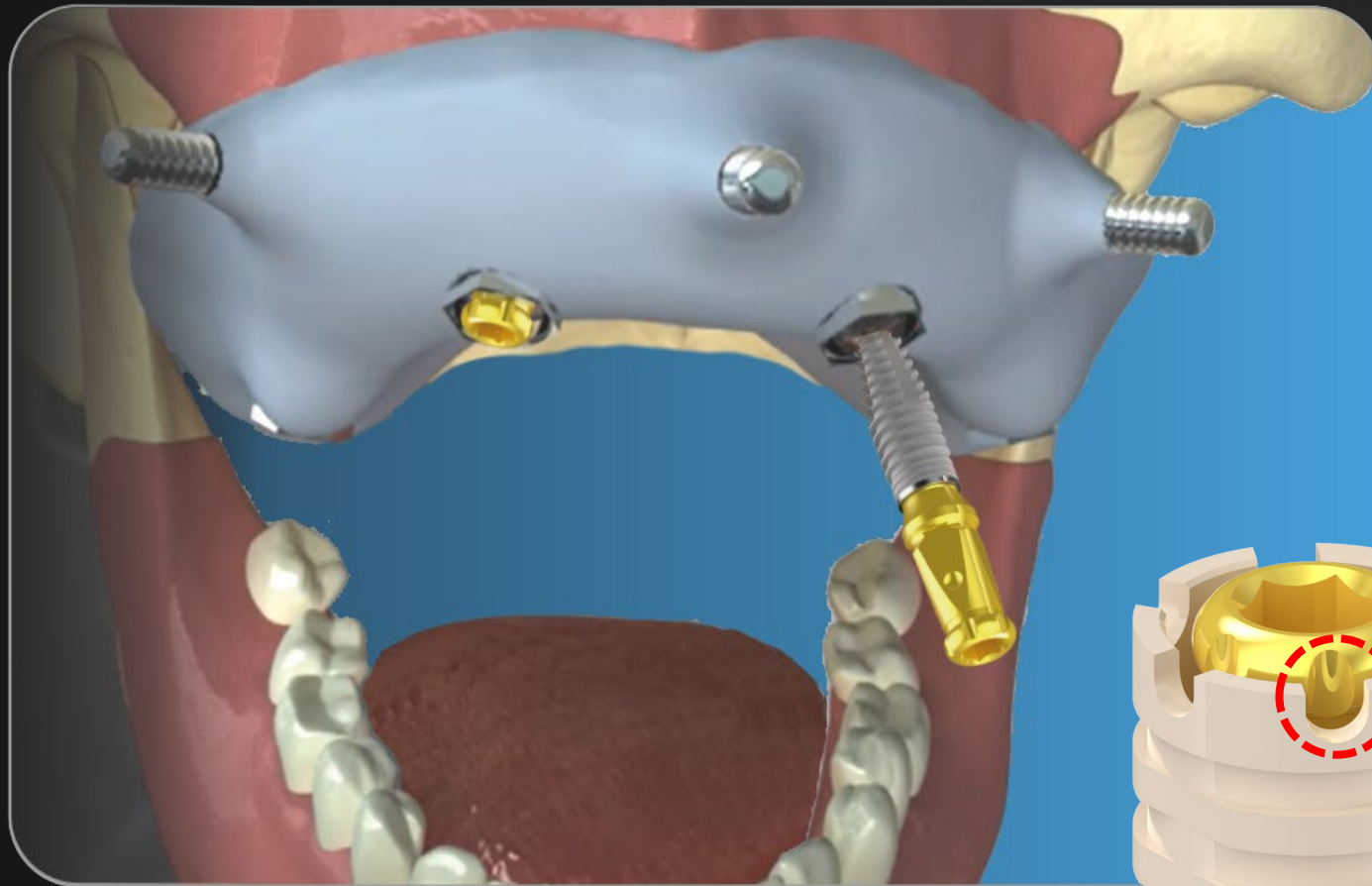


5

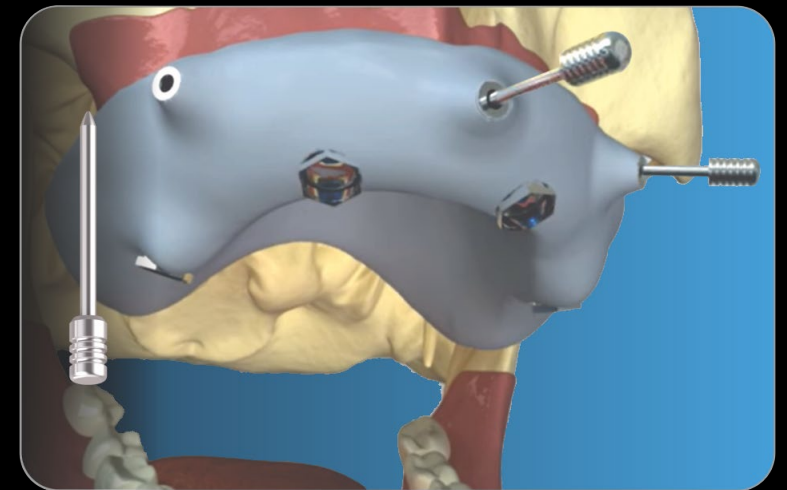
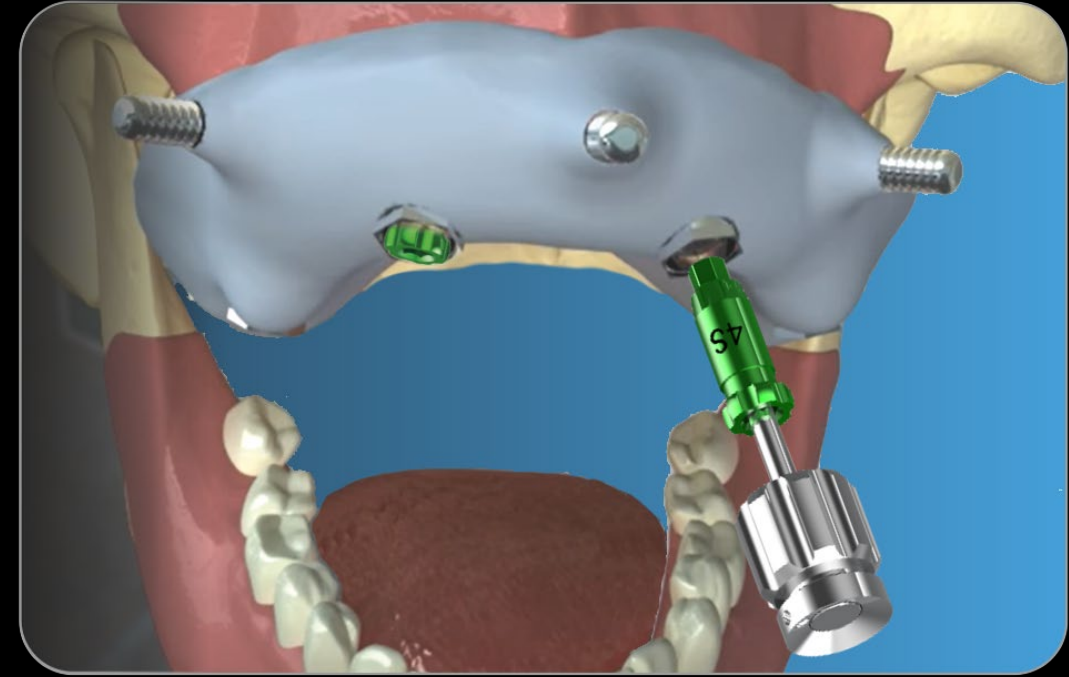
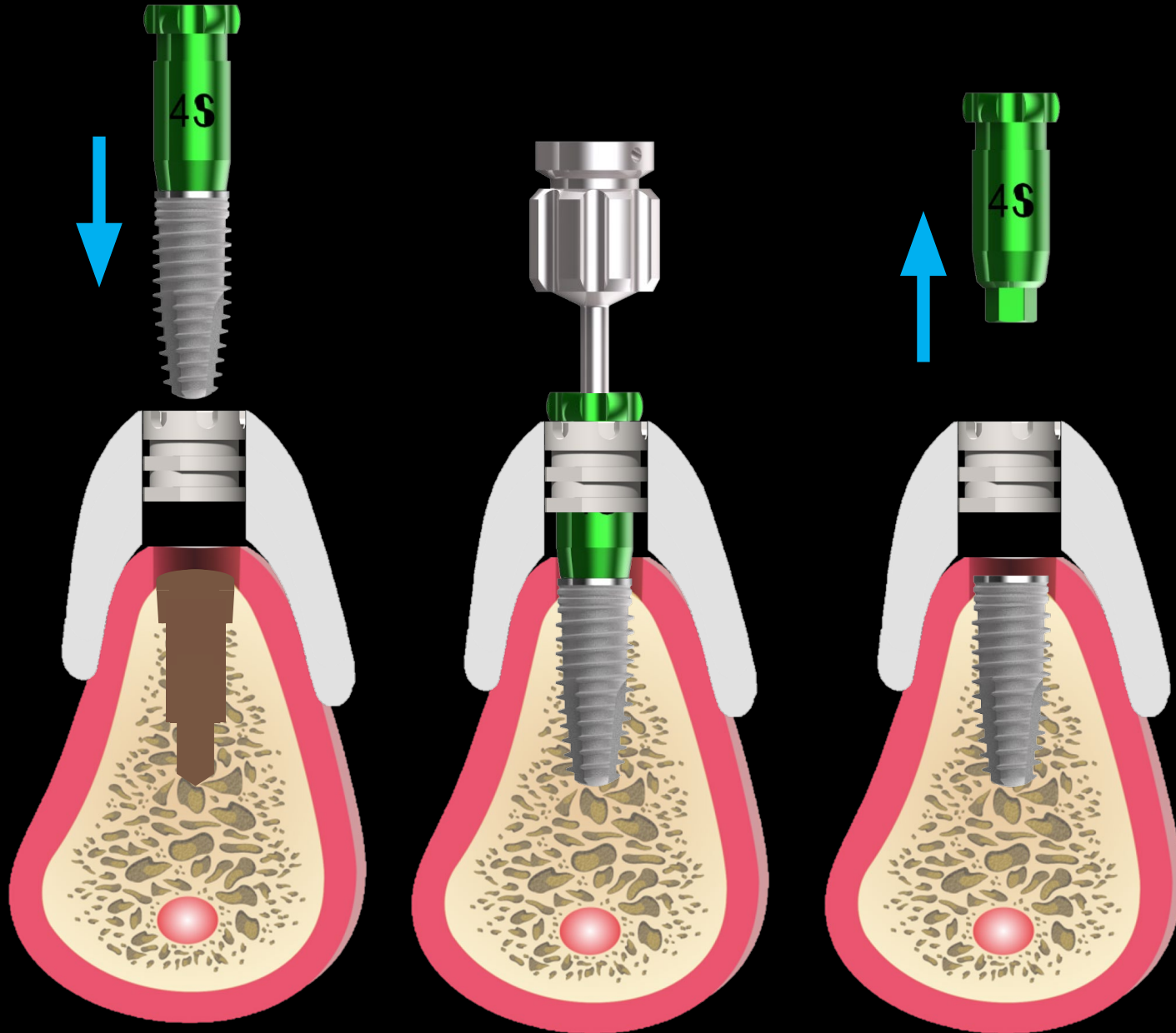


6

AVVITAMENTO IMPIANTO CON **MOUNTER STD**



AVVITAMENTO IMPIANTO CON MOUNTER CALIBRATO



RIMOZIONE DEL MOUNTER CON ESTRATTORE

